

WEATHER

	Min.	Max.	Precip.
Wednesday, Jan. 15	24	34	Trace
Thursday, Jan. 16	21	40	0.01
Friday, Jan. 17	21	40	0.15
Saturday, Jan. 18	24	38	0.08
Sunday, Jan. 19	24	37	0.00
Monday, Jan. 20	24	37	0.00
Tuesday, Jan. 21	28	42	Trace

NINETY-NINTH YEAR—No. 31

12 Pages This Week

CHELSEA, MICHIGAN, THURSDAY, JANUARY 23

SUBSCRIPTION: \$3.00 PER YEAR

Many Events Planned To Aid Dimes Fund

Chelsea March of Dimes campaign is in full swing with many area groups planning and enthusiastically supporting annual and biennial fund-raising events to combat birth defects.

Chelsea High school student council is planning a "Fun Night" at the high school next Tuesday at 9 p.m. Admission paid by high school students who wish to indulge in this music-and-games will be donated to the March of Dimes.

Chelsea mothers are warming up their walking shoes for the Mother's March scheduled for Thursday, Jan. 30. This event normally brings in the most money for March of Dimes, between \$700 and \$800. Chairman Mrs. Charles Koenn has broken Chelsea into 10 smaller areas to be covered by captains Mrs. Brian French, Mrs. Cecil Cobb, Mrs. Herbert Hinz, Mrs. David Rowe, Mrs. Charles Castell, Mrs. Thomas Murphy, Mrs. Joe Scott, Mrs. Robert Merkel, Mrs. Richard Harvey and Mrs. Vince Burg.

The main collecting hours are 7 to 8 p.m. Thursday, although participants who cannot march at the time may collect during the day. Husbands who would like to be helpful will wear buttons saying "Tonight I Am A Mother" to prove their authenticity.

(Continued on page six)

Bulldog Cagers Lose to Both Dexter, Dundee

Chelsea Bulldogs didn't improve their league standings last week-end.

Friday night the Dexter Dreadnaughts didn't exactly romp over Chelsea, but managed to defeat the Bulldogs, 78-67, after taking an early lead and remaining approximately 10 points ahead during the entire game.

Jim Wojcik and Lance Burghard led the Chelsea squad with 25 and 17 points, respectively, but "Dexter" just outlasted us as Chelsea Coach Tom Balistrere said.

Saturday night a strong Dundee team downed Chelsea by the improbable score of 107 to 70. Although every Chelsea man that played managed to score, Bulldog high scorer was Art Farley with 13 points. Mike Bassett led rebounding with 16 to his credit. Balistrere described the Dundee squad as a "strong, experienced ball club" and commented that the game did not exactly rate among Chelsea's best. Chelsea trailed along about 20 points behind Dundee after the first quarter.

Mr. and Mrs. Duane Gentner and daughter, Lisa, of Hanover Park, Ill., were week-end guests at the home of their parents, Mr. and Mrs. Floyd Gentner. On Saturday they visited friends in Ypsilanti and Ann Arbor. Other Sunday visitors at the Floyd Gentner home were Mr. and Mrs. Ronald Gentner and Tracy of Ypsilanti, Mr. and Mrs. Russell Abdon and Robert Abdon of Chelsea.

PEANUT SALE: Exchanging peanuts for March of Dimes donations are Steve Worden and Jeff Reed. Glenn Kraal, daughters Peggy and Becky and Mrs. Kraal, contribute to the Boy Scouts' annual peanut sale for the National Foundation.



Approximately \$200 was traded for bags of peanuts in the downtown area and at Stop & Shop Friday evening and all day Saturday, according to organizer Jim Brannan.

Parker Brown Dies Suddenly At His Home

Parker Brown, Chelsea superintendent of public works, was found dead in his apartment at 120 South St. Wednesday morning.

A new supervisor has not yet been employed by the Village, according to Village Clerk George Winans. "His death is a real loss to the community—he was a dedicated worker," commented Winans.

An employee of the public works department notified Chelsea Police when Brown failed to report to work or answer his telephone. At 8 a.m. Chief George Meranuck forced open the apartment door where Brown lived alone, and discovered the body in bed. Medical examiners estimated the time of death to be approximately 8 a.m.

Brown came to Chelsea in 1952 and was employed by the public works department. He was promoted to supervisor four years ago.

Brown, 63, was born in Allen, Ky., to Will and Lulla Brown. He married Rebecca Jarrell while living in Allen.

Survivors include his widow, of Allen, Ky.; his mother of Allen; two sons, Danny Ray and Ralph Gordon of Allen; an adopted son, Curtis Lee Jarrell of Chelsea; brothers Sam, Harry and Lincoln, of Allen; sisters Marie Starr, Rhodie and Mae West of Ohio; and six grandchildren. His father preceded him in death.

Funeral arrangements will be made by Carter & Callahan in Prestonsburg, Ky.

Jaycees Start Campaign for Kidney Donors

A community-wide program to obtain pledges for the nation's first kidney-donor bank was adopted Jan. 21 by Chelsea Jaycees.

Glenn G. Weir of 509 Madison was named by Jaycees President Donald Proctor to head the donor campaign.

The drive will be conducted in co-operation with Michigan Jaycees and the Michigan Kidney Foundation, a Michigan United Fund agency.

Under the program local Jaycees will encourage persons to pledge their kidneys for transplant use after their death. Donors will be asked to sign pledge cards and carry forms stating that they are kidney donors.

The signed pledges are registered by the Michigan Kidney Foundation in co-operation with the University of Michigan Medical Center.

University of Michigan physicians say there is an average of 20 hospitalized patients at the center who are candidates for a transplant although a donor cannot be obtained in most cases. Doctors estimate that the kidney donor bank could save up to 200 lives each year.

Melvin "Red" Lamb, former Chelsea barber and Manchester resident, is one person who benefitted from a kidney donor. Both of Lamb's diseased kidneys were removed and he was kept alive.

(Continued on page six)



ENERGETIC AND CREATIVE farming practices won Charles Koenn recognition as the Jaycees 1968 Outstanding Young Farmer. Since beginning to farm three years ago, Koenn has worked himself into a 50-50 partnership with his father and added numerous capital improvements to the operation.



OYM AWARD: The Rev. Daniel Kellin received the Outstanding Young Man award at the Jaycees 1968 dinner program Tuesday in recognition of his enthusiastic professional, personal and community contributions while serving as pastor of the

Outstanding Service Awards Goto C. Koenn, the Rev. Kellin

Charles H. Koenn and the Rev. Daniel A. Kellin were presented Distinguished Service awards at the annual Chelsea Jaycees Bosses Night dinner program Tuesday night.

The awards program was the highlight of National Jaycee Week's observance by the Chelsea Jaycees. Seven candidates were nominated for Outstanding Young Farmer and Outstanding Young Man awards and judged on the basis of personal, community and professional qualifications by a panel of three non-Jaycees.

Other nominees include Richard Boss, Bud Ringe and Danny Murphy for Outstanding Young Man; and Reuben Lesser, Jr., and Lloyd Gray for Outstanding Young Farmer.

The program was preceded by a dinner and cocktail hour at the Knights of Columbus Hall for approximately 75 Jaycees, bosses and guests. Guest speaker was Merritt Martin, past Jaycee national vice-president and current assistant to the president of Detroit Chamber of Commerce.

Martin discussed inner-city problems with employment, housing, education and indicated that small towns would face the same problems in several years.

Kellin, 35, is pastor of the First Congregational church and chaplain at the Ypsilanti Battalion of Michigan National Guard. He attended Kalamazoo College until joining the air force for four years. After studying for half a year at the University of Colorado, he obtained a graduate degree in history.

Further study was taken at Michigan State University. By financial necessity he took the pastorate of DeWitt Community Church. He was called by the First Congregational Church after five years successful duty. He received a first lieutenant commission in the Michigan National Guard in August, 1966 and was promoted to Captain in September, 1968.

Kellin now serves Detroit, Kalamazoo and other Signal Battalion from his post at Ypsilanti. His wife, Ruth, says mothers of Kellin's men express sincere compliments for his service.

Kellin represents his graduation class in the Kalamazoo Alumni Association. At the state level he is chairman of the Health and Welfare committee of UCC, and is a member of the board of directors of United Church Menors. He serves on the Christian Education com-

mittee of the Jackson-Ann Arbor Association and was elected president of the Ministers Association in September.

In Chelsea, he is a member of Chelsea Ministerial Association. During 1968 he served on Spaulding for Children Board of Advisors and began service on the Spaulding board of directors this month.

Kellin is married, with three children, and lives at 211 E. Middle St.

He was nominated by Roland W. Eder, Jaycees district vice-president, who explained that Kellin "is deeply loved by all who truly know him... he excels in his work, especially as pastor of our church which is now very much alive and growing. Dan and his wife, Ruth, have literally blown the breath of life into the church."

William Rademacher, Robert Foster and Luther Kusterer served as judges for the OYM award.

25-year-old Charles H. Koenn was selected by Don Johnson, Washington Agricultural agent; John Truett, Soil Conservation manager; and Carl Robertson, FFA management, for the 1968 Outstanding Young Farmer award.

(Continued on page three)

QUOTE

"It is error alone which needs the support of government. Truth can stand by itself."

—Thomas Jefferson.

Career Night Slated Monday At High School

Representatives from Many Fields Available for Student-Parent Advice

A Career Information Night including seven participating schools has been scheduled for Monday, Jan. 27 at Chelsea High school.

All CHS students and their parents are encouraged to attend the multi-career educational program, beginning at 7 p.m. Junior and senior students from Dexter, Fowlerville, Grass Lake, Manchester, Stockbridge and Whitmore Lake High schools have also been invited to participate in this first co-operative evening program held jointly by these schools.

If the program is successful, this event will later be followed by similar programs concentrating on one field such as agriculture, health occupations or civil service.

Program master John H. Bowen, a consultant with the county Intermediate School District, will introduce guest speaker Mrs. Anna Marr, manager of Michigan Employment Security Commission. Chelsea High Principal Charles Lane will also speak.

A "Careers Film Festival" will follow the guest speakers in the auditorium and continue throughout the evening, while three rotating sessions concerning various career fields progress in separate rooms.

The sessions, scheduled to begin at 7:55, 8:35 and 9:10 p.m., will include nine fields of employment, including clerical and secretarial, sales and marketing, mechanics, modeling, cosmetology, skilled trades, law enforcement, food services and health careers.

A large number of resource persons will be available in many fields to give information and answer questions.

In the clerical and secretarial department, available resource persons will include James Finn, counselor at Cleary College; Mr. Gimmety, personnel officer at University of Michigan; Gerald Francis, director of Hamilton Business College; and Margaret Watrous, administrative assistant of personnel, Michigan Bell Telephone Co., who will provide a film for male and female students.

Students interested in careers in sales and marketing will be offered the services of Holly Love, personnel officer at Jacobson's Department Store; Jane Baker, special promotions (fashion shows) at Goodyear's Department Store; and William Washburne, manager of S. S. Kresge Co. in Ann Arbor.

The trade and industrial field will be covered by Robert McNally, counselor at Washtenaw Community College. He will have information concerning machine related hydraulics, electronics, auto mechanics, industrial drafting, architecture and technical commercial art.

Representing mechanics and auto repair will be George Palmer, owner and manager of Palmer Motor Sales; a representative of Chrysler Proving Grounds; Bryan Gibson, supervisor of education and training at Chevrolet Motor Division's Willow Run Plant; and James Sanderson, service manager, Howard Cooper Volkswagen, Inc., Ann Arbor.

Modeling schools representatives will be Daniel J. Moran, Jr., director of admissions at Patricia Stevens Career School, Milwaukee (film), and Joan Jewett, director, Joan Jewett Career School, East Lansing (film).

Alfreda Johnson of Alexandra School of Cosmetology will explore the possibilities in a cosmetology career.

(Continued on page five)

Chelsea High Evaluation Study Begins

Faculty and administration at Chelsea High school have launched a comprehensive evaluation of all phases of the present program in preparation for evaluation and recommendations for improvement from the North Central Association of Colleges and Secondary Schools.

Each member school is required by NCA to engage in this self-study at least once every seven years and determine the individual school's strengths and weaknesses.

Feb. 25, 26, and 27 a team of educator will be sent to Chelsea from NCA to review and assist in the study, according to Principal Charles Lane. No high school classes will be held Jan. 29 so teachers may work on the evaluation.

Bruce Galbraith and Patrick Wade have been appointed co-chairmen of the steering committee which will have over-all responsibility for the evaluation. The committee will co-ordinate efforts of faculty in studying the adequacy of each subject area, library, guidance and other services, administration, activity program and program of studies.

The "Evaluation Criteria" will be used as a guide for the review. This instrument is published by the National Study of Secondary School Evaluation to list criterion for measuring schools.

This evaluation for NCA relies more heavily on the competence of the local staff to analyze its own.

(Continued on page five)

Gun Safety Program Set By Jaycees

Chelsea Jaycees have scheduled a gun safety program similar to the one completed by 57 area youngsters last year.

A preview program Jan. 29 will acquaint interested boys and girls from 7 to 14 years of age with the course and determine how many youngsters plan to enroll. The preview, slated for 7 to 8 p.m. at Chelsea High school, will feature discussion by Chelsea Police Chief George Meranuck and Conservation Officer Donley Boyer.

Shooting education, good marksmanship training and BB gun safety will be stressed during the 14-hour course, scheduled for seven two-hour sessions on Wednesday night in February and March.

Classes after the preview will meet in the South School gym. All guns will be furnished by the Jaycees and participants are asked to leave their own guns at home.

Only the safest type BB gun will be used during instruction. Students should bring 50 cents to the preview or the first class to cover expenses.

This program is part of a national gun safety program for children sponsored by Jaycees during the past eight years. Chelsea Jaycees began offering the course last year and hope to make it an annual project.

Gun safety chairman David Martin asks that interested boys and girls bring the registration blank from The Chelsea Standard, completed and with their parent's signature, to the preview or to Chelsea, Drug.

Council Briefs

At a regular session of the Chelsea Village Council Tuesday, Jan. 21 a public hearing was held regarding the amendment to Village Zoning Ordinance No. 55 by the addition of a required Site Plan Review. Objections to and approval of the amendment was expressed from the audience.

Motion was made and approved to accept the amendment as read.

A discussion was held regarding the Flanders Street ejector station and possible solutions to the problem.

A motion was made and approved to authorize the firm of Finkbeiner, Pettis and Strout, Village Engineers, to proceed with plans to install an adequate lift station to replace the present ejector.

A proposal that the village adopt the Washtenaw County Electrical Code was tabled for further study.

Motion was made and approved to transfer \$1,095 from the general fund to the Public Works Equipment fund as final payment for the 1968 dump truck.

Motion was made and approved to pay bills as presented.

Established 1871 **The Chelsea Standard** Telephone GR 5-3581
 Excellence Award By Michigan Press Association
 1951-1952-1960-1964-1965-1966
 Walter P. Leonard, Editor and Publisher

Published every Thursday morning at 300 North Main Street, Chelsea, Mich. 48118, and second class postage paid at Chelsea, Mich., under the Act of March 3, 1879.

ADDRESS CORRECTION REQUESTED

Subscription Rates (Payable in Advance)

In Michigan:	Outside Michigan:
One Year: \$3.00	One Year: \$4.00
Six Months: \$1.75	Six Months: \$2.25
Single Copies: \$.10	Single Copies: \$.10

Service men or women, anywhere, 1 year - \$5.00

MEMBER National Advertising Representatives: **MICHIGAN NEWSPAPERS, INC.**
 251 Michigan Ave.
 East Lansing, Mich. 48824

Association - Founded 1885

JA Members Plan Series of Future Events

Many special events will mark Junior Achievement Week, Jan. 26 through Feb. 1.

Membership drives at the local and regional level have been launched in hopes that present members will encourage others to attend JA meetings.

JA headquarters required that the winning achiever bring a minimum of five new members to meetings for three weeks to be eligible for the grand prize. Chelsea advisors relaxed the competition requirements in the local campaign by dropping the minimum number of new members.

To qualify as a new member, each person must attend the Jan. 28 and 30 meetings.

The Chelsea achiever who brings in the largest number will be awarded a transistor radio. Mid-year elections will take place at the Jan. 30 meet, when the membership winner will be designated.

A JA sales fair open to all companies in southeastern Michigan offers an opportunity to sell wares this week at Westland Mall. Last year's reports indicated receipts of \$100 to \$200 for each participating company.

Vickie Steinhaw and Pat Hergert, Chelsea company presidents, will be eligible to attend the annual Teen-age Presidents' Banquet Tuesday at the Statler Hilton in Detroit.

The youthful presidents will be in the distinguished company of numerous business, educational, and civic leaders.

Advisors have selected Larry Bauer and Pat Hergert as Chelsea representatives in the Mr. Executive and Miss Achievement competition for outstanding achievers in southeastern Michigan. Finalists will be judged on poise, personality, appearance and JA business knowledge at the Sheraton Cadillac Hotel Jan. 30.

Achievers are also anticipating the best salesman banquet March 10 at the Statler Hilton and the March 15 Achiever Dance in the Verside Ballroom, Cobo Hall.

MONEY TROUBLE?
ONE PLACE TO PAY!
Credit Management Service
662-2565
342 Municipal Court Bldg.
Ann Arbor
 State Licensed and Bonded

JANUARY CLEARANCE

- on all -

FURNITURE & APPLIANCES

Our entire floor stock of fine furniture, refrigerators, ranges, televisions offered at **HUGE SAVINGS** for a limited time only!

MEABON'S TV, Furniture & Appliances

1170 M-52 South, Chelsea GR 5-5191

SUNDAY'S SERMON

Your World

The world may not be yours to command, but as far as your eye can see and as far as your voice will carry you can exert influence that one way or another affects that part of the world in which you live.

You can bring about change. All it takes is attention to the here and now. You make a better world when you help with a community project, when you come to the aid of someone in need, when you make a positive approach to any wrong or sad situation.

You can offer an example in living that may help someone who has doubts, or who would lean in the wrong direction. You may be able to lift a heavy heart with nothing more than a smile.

Don't stand on the side of the road and watch your world with a sense of apathy. Move out into the mainstream, accept, and reject, help and guide, and be a leader, when you can.

You and your world will be much the better for it all.

Home Economics Study Groups Calendar

Thursday, Jan. 23—Kinde Kuche, home of Jean England, 107 W. Main, Manchester.

Monday, Jan. 27—Lodi Plains, home of Mrs. John Rinn, 6082 Saline Ave., Ann Arbor. Saline Ann Arbor, Saline, Wednesday, Jan. 20—Arborites, home of Mrs. William Staebler, 522 Second St., Ann Arbor.

Farm Calendar

Jan. 23—Sheep Short Course, Manchester, High school, 7:30 to 10 p.m.

Jan. 28—Beef Short Course, Tecumseh Grange Hall, Tecumseh, 9:30 a.m. to 3:30 p.m.

Don't Mix Booze With Snowmobiles

Snowmobile operators have been warned that it's just as much of an infraction of the law to operate a snowmobile while under the influence of alcohol as it is to operate a car.

A spokesman for the Michigan Department of State says, "Nix on the booze." The same holds for operating a snowmobile after taking barbiturates or any derivative of barbiturates.

Living It Up

MATCH SPEED WITH ROAD CONDITIONS

TAKE YOUR TIME NOT YOUR LIFE

MAXIMUM SPEED 50

MICHIGAN MIRROR

By Elmer E. White, Secretary, Michigan Press Association

Hard Start
 Michigan's legislators convened their 1968 session and braced for some hard multi-million dollar decisions in the weeks ahead.

As is customary, the first days were devoted to organizing, adopting rules and formally selecting leaders. Plenty of fireworks looms on the horizon.

More than 1,500 bills to eliminate, or alter existing laws, or enact new ones are expected to be introduced in the legislature before final adjournment, probably late next summer.

During the 75th biennial session of the legislature, the state's lawmakers will turn their attention to:

Spending and taxes, the two issues which customarily trigger the longest, strongest debate because they affect all of the state's nine million residents.

Education, including tax aid to parochial schools and increased appropriations to state-supported colleges and universities.

Public employee strikes and how to prevent them. Special consideration will be given to teacher-school board problems in an effort to avert a classroom crisis next fall.

Public welfare programs, which this year cost the state \$229 million. A joint Senate-House committee study of the entire welfare structure is expected.

Crime control, on the state's streets and at the organized level. Attorney General Frank J. Kelley has prepared a list of proposals ranging from motorcycle gang crackdowns to redefining the use of electronic bugging devices to higher pay for county prosecutors.

Labor, including an AFL-CIO bid for a \$2 per hour minimum wage law, with overtime pay for work in excess of 40 hours.

Medical law changes in the areas of human organ transplants and abortion restrictions. A Senate committee headed by Sen. Lorraine Beebe, R-Dearborn, has been investigating this field.

Traffic safety, with legislation to lower the blood alcohol level at which a driver is legally presumed drunk and tougher restrictions on inebriated drivers as the major items.

The new session is the first split legislature in Michigan since 1937. Democrats control the House, 57-52, with one vacancy due to the recent death of Rep. Frederic J. Marshall of Allen; Republicans control the Senate, 20-18.

Leaders of both chambers anticipate at least a semblance of bipartisan co-operation on the outset but admit many legislators will be maneuvering for position in the 1970 general election as the session wears on.

A new Governor and House are to be elected in 1970, and Republicans fear that Democrats, with their majority in the House, will try to use their legislative power to create campaign issues.

Gov. George Romney's adieu to Michigan was anything but soft-line. He triggered widespread reaction by proposing Michigan's parochial schools consider leaving secular education to the state.

In his farewell message to the people, Romney said it could be too expensive a proposition to ask taxpayers to support both private and public school systems.

He also said the Governor, with consent of the Senate, should appoint justices of the seven-member State Supreme Court and Judges of the 12-member Court of Appeals.

The same procedure, he added, should be used to name members of the State Board of Education and the governing boards of the University of Michigan, Michigan State and Wayne State universities.

The judicial vacancies now are filled by non-partisan elections, although Supreme Court justices are nominated by party conventions. Candidates for the education boards run in partisan, statewide elections.

GLAUCOMA
 Glaucoma, a disease characterized by an increase in fluid pressure in the eye, is the second greatest cause of blindness in the United States, accounting for nearly 14 percent of all loss of sight. In its most common form, glaucoma can destroy vision slowly and painlessly, sometimes without giving any warning signs or symptoms to its victim until most of his sight is gone.

Yours truly,
 Uncle Lew.

Uncle Lew from Lima Says.

DEAR MISTER EDITOR:

The fellows at the country store Saturday night pooled their ignorance and came up with opinions on everything from marriage to house flies. The advice they were giving wasn't worth no more than it cost, and it didn't cost nothing so I just set and listened.

First off, Zoke Grubb reported he had went to a church wedding of one of his kinkfoks Thursday night and he reported the bride and groom stood side by side and said "I plight thee my troth." He was asking the fellows what them words ment but nobody could tell him, so a note was made to ask Zoke's preacher the next time he comes to one of our sessions.

Bug Hookum figured that whatever it meant it give the woman the big end of the stick. He said wimmen was always getting excited about their equal rights, and they refuse to say "Obey" in that "love, honor and obey" part of the vows.

Josh Clodhopper, that takes a dim view of things in general, said one of the things wrong in this troubled world was millions of men and women "plighting their troth" without having no idea of what they was "plighting."

Clem Webster was disagreed with Josh, said the wimmen figured plight for the groom meant fider, claimed Clem, they figger he giveth everything and troth meant he kept on giving. As for the bride, claimed Clem, they figger they got a natural right to change their mind even afore they make it up.

We postponed any more discussion on this matter, Mister Editor, until we can get in touch with Zoke's preacher.

Ed Doolittle reported he had saw in the papers where one of them science fellers in Boston wanted to control the population explosion by putting chemicals in the water. Ed said he was agin it, that it was safer to let nature take its course. He said he saw that if nature didn't control the housefly population and if ever offsprung from one pair of flies lived for six months the whole world would be covered in house flies 47 foot deep. Ed said one of them federal agencies had figgered them two flies would grow to 100 quintillion and Ed said the only thing he could compare with that kind of growth was the national debt under the Democrats.

Personal, Mister Editor, I go

BRAG ENTERPRISES MODERNIZATION DIV.

SPECIALISTS IN —

- ★ ALUMINUM SIDING ★ ROOM ADDITIONS
- ★ MODERN BATHS ★ WET & WARM AIR HEATING
- ★ KITCHENS ★ RECREATION ROOMS
- ★ GUTTERING ★ ROOFING
- ★ BLOWN INSULATION ★ FIREPLACES

CALL 426-4798 FOR FREE ESTIMATES

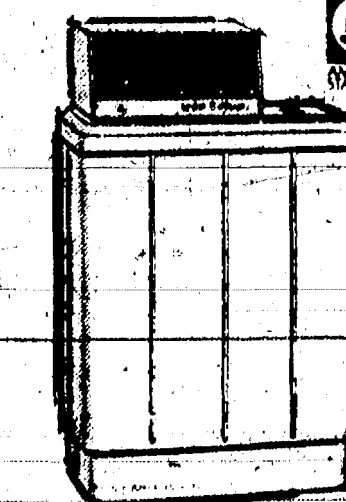
SPECIAL INTRODUCTORY OFFER:

Hands tied by **STRINGY HAIR?**

Shampoo it back to a soft, manageable crown of beauty with soft water—from the American-Standard water softeners!

- fully automatic
- beautiful, sturdy cabinet
- only one moving part
- completely non-corrosive

Call today for free estimate! *standard inline installation



AMERICAN-STANDARD water softeners

only \$29900 installed

easy terms, low-cost loans available for F.I.A. financing

JUST REMINISCING

Items Taken from the Files of The Chelsea Standard

4 Years Ago...

Thursday, Jan. 14, 1965—

Workers at the Rockwell-Standard Corp. plant here Wednesday afternoon, ratified the new union contract, as did the Ann Arbor plant and one other group Tuesday.

Confirmation from the other five plants assures that they too have ratified the agreement. Picketing continued Wednesday after 200 employees walked off their jobs last Friday, objecting to the lack of company-union contract.

The Key Club of Chelsea High school will sponsor a sledding party for all area children between the ages of 6 and 12 on Jan. 16. Children are asked to meet at the Junior High school and transportation will be provided to the sledding areas on the Rod & Gun Club grounds.

The quick action of 12-year-old Christine Doll, daughter of Mr. and Mrs. Donald Doll, saved the life of Cynthia Nelson of Crooked Lake Sunday. Christine was spending the week-end at the Nelson home, and pulled her out of icy water approximately seven feet deep.

Tomorrow a special election will take Washtenaw county voters to the polls to decide whether a community college should be built in the county to authorize a maximum taxation annually of 1.25 mills assessed valuation and elect six from a 38-person slate of candidates to serve on a Board of Trustees.

The promotion of William Hoppe, former Chelsea resident, from Forester Trainee at West Branch to Assistant Area forester for the Ausable State Forest at Grayling, has been announced by C. Troy Yoder, Region II manager, Department of Conservation.

Tuesday night the Deacons of the First Congregational church held their organizational meeting at the parsonage and selected William Tite as their chairman. This responsible position is doubled in importance because the Chairman of the Deacons is automatically the Moderator of the church.

Airman First Class Gerald Smith met HM-3 Robert James Weir in Saigon during the New Year's holidays. Bob Hope who was on tour there, during the holidays, and visited with hospital patients and personnel and shook hands three times with Jim Weir.

Friends surprised Mr. and Mrs. John Roentzler Sunday, Jan. 1, with a party honoring their 15th wedding anniversary. They were married Jan. 14, 1950.

14 Years Ago...
 Thursday, Jan. 14, 1955—

Chelsea has a 1954 New Year's baby, probably the only one in Washtenaw county. The baby is Cheryl Diane, daughter of Mr. and Mrs. William C. Wilkerson, and was born at the family home, 754 Sanders St., before the mother could be taken to a hospital.

The Wilkersons have two other children, both born on special days. The oldest son was born on Friday, the 13th, and the other was born on April Fool's day.

Mrs. Phoebe Ross, a resident of the Methodist Home the past 11 years, will be 100 years old next Tuesday.

Howell Livestock Auction
 The Wise Owl Says Ship to Howell SALE EVERY MONDAY, 2 p.m. Phone 546-2470, Wim Franklin Mazon 677-8941

Market Report for Jan. 20

CATTLE—
 Steers and Heifers:
 Choice, \$28 to \$29.70
 Good, \$25 to \$27
 Ut.-Std., \$22 to \$24
 Fed Holsteins, \$22 to \$25.50

Cows:
 Heifers: \$19 to \$21
 Ut.-Comm., \$17 to \$18.50
 Canner-Cutter, \$15 to \$17
 Fat Yellow Cows, \$14 to \$16.50

Bulls:
 Heavy, \$23-\$24.75
 Light and Common, \$21 to \$23

Calves:
 Prime, \$38 to \$44
 Good-Choice, \$34 to \$38
 Cull-Med., \$20 to \$26
 Heavy Deacons, \$32 to \$38
 Light Deacons, \$28 to \$32

Feeders:
 Good-Choice, \$28 to \$31
 Common-Med., \$22 to \$28
 Dairy Cows, \$200 to \$350

Hogs—
 Butchers:
 100-lb. to 240-lb. No. 1, \$20 to \$21.40
 100-lb. to 240-lb. No. 2, \$19 to \$20
 240-lb. and up, \$17 to \$19

Sows:
 Fancy Light, \$16 to \$16.50
 800-lb. to 800-lb., \$13 to \$16
 800-lb. and up, \$14 to \$15

Bacon and Sides:
 All weights, \$12.50 to \$17
 Pigs:
 Per Head, \$10 to \$21

Sheep—
 Sheep: \$14.00 to \$14.50
 Choice-Prime, \$28 to \$28.50
 Wethers: \$14.00 to \$14.50
 Choice-Prime, \$25 to \$27
 Good-Utl., \$23 to \$25

Goats:
 Slaughter, \$6 to \$10
 Feeder Lambs:
 All Weights, \$23 to \$25.50

34 Years Ago...

Thursday, Jan. 17, 1935—

At a Thursday afternoon meeting at the home of Mrs. Elizabeth Wackenhut, the St. Paul's Missionary club was organized, with Mrs. Wackenhut as president and Mrs. Lizetta Widmayer as chairman and secretary. All members of the club are over 70 years of age. The club will work for Foreign Missions and are now making bandages for a hospital in India.

Harry Kipke, University of Michigan coach, will be the speaker at the football banquet Tuesday for members of the Chelsea High school football team, coaches Spaulding and Johnson and residents of the community.

Acquisition of land by the federal government for the establishment of a national park of upwards of 10,000 acres in Washtenaw and Jackson counties has definitely begun, and the purchase of the first block of 4,700 acres has received final approval. The immediate program calls for an investment of \$150,000 to \$200,000. For the present, the enterprise is known as the "Waterloo Land Use Adjustment Demonstration Project."

The annual meeting of the German-Mutual-Farmers' Fire Insurance Co. was held Monday at the court house in Ann Arbor. George Haab was elected president; John Frey, vice-president; George C. (Continued on page five)

24 Years Ago...
 Thursday, Jan. 18, 1945—

One of the most active organizations in Chelsea, operating to bring comfort to boys and girls in service, is the MOMS' Unit, which was organized April 11, 1944. The group has sent a donation to Veterans' hospital, sent 402 Christmas boxes, and made articles for boys at Percy Jones hospital. Mrs. Norman Schmidt, president of the organization, said a membership drive is now being conducted in an effort to substantially increase the present membership of 68.

George L. Winans, 22, has arrived at Army Air Forces Redistribution Station No. 2 in Miami Beach for reassignment processing after completing a tour of duty outside the continental United States.

Virginia Quilatt is heading a project within the Flying Engineers 4-H club to collect waste-fats and papers and states that these things may be left at the Salem Grove parsonage at any time that is convenient.

Nancy Loose will begin teaching tumbling to the GAA girls on Tuesday.

Henry Ortbring, Jr., has accepted the position of carrier on village mail route one, and also parcel post deliveries, Herman Berke recently resigned and is now employed at Federal Screw Works.

Private Clifford W. Fauser of Chelsea, recently was awarded the Bronze Star for meritorious service in combat. He also was promoted to Private-First Class. He is in the 301st Infantry Regiment of the 91st "Powder River" Division fighting on the Fifth Army front in Italy. He previously received the Purple Heart and Combat Infantryman Badge.

Documentary On Apollo 8 Set at U-M

Ann Arbor—A documentary film photographed mostly by the Apollo 8 astronauts during their historic moon voyage will be shown at the University of Michigan twice on Jan. 25.

The show, open to the public without charge, is part of an illustrated lecture, "Apollo 8 and Beyond," by Capt. Robert F. Freltag, a U-M alumnus and director of NASA's Manned Space Flight Center Development. The program, arranged by the U-M College of Engineering, is scheduled for 4 p.m. and again for 8 p.m. in Hill Auditorium.

Henry Ortbring, Jr., has accepted the position of carrier on village mail route one, and also parcel post deliveries, Herman Berke recently resigned and is now employed at Federal Screw Works.

Private Clifford W. Fauser of Chelsea, recently was awarded the Bronze Star for meritorious service in combat. He also was promoted to Private-First Class. He is in the 301st Infantry Regiment of the 91st "Powder River" Division fighting on the Fifth Army front in Italy. He previously received the Purple Heart and Combat Infantryman Badge.

At a Thursday afternoon meeting at the home of Mrs. Elizabeth Wackenhut, the St. Paul's Missionary club was organized, with Mrs. Wackenhut as president and Mrs. Lizetta Widmayer as chairman and secretary. All members of the club are over 70 years of age. The club will work for Foreign Missions and are now making bandages for a hospital in India.

Harry Kipke, University of Michigan coach, will be the speaker at the football banquet Tuesday for members of the Chelsea High school football team, coaches Spaulding and Johnson and residents of the community.

Acquisition of land by the federal government for the establishment of a national park of upwards of 10,000 acres in Washtenaw and Jackson counties has definitely begun, and the purchase of the first block of 4,700 acres has received final approval. The immediate program calls for an investment of \$150,000 to \$200,000. For the present, the enterprise is known as the "Waterloo Land Use Adjustment Demonstration Project."

The annual meeting of the German-Mutual-Farmers' Fire Insurance Co. was held Monday at the court house in Ann Arbor. George Haab was elected president; John Frey, vice-president; George C. (Continued on page five)

Hot water costs less with Gas.

Today you need more hot water than ever before. And you can have it. All the hot water you want. Oceans of it. Hot as you like it. For just pennies a day with Gas.

Only Gas gives you so much hot water for so little. Saves dollars over electricity. In fact, a Gas water heater turns out more hot water in one day than an electric one twice its size.

So, if you've been running short of hot water at your house, check into the new fast-action Gas water heaters at your plumber's or your plumbing and heating dealer's. Or, if you wish, call us. You can have all the hot water you want for less than you'd imagine.

Gas makes the big difference... costs less too!

MICHIGAN CONSOLIDATED GAS COMPANY

1170 M-52 South, Chelsea GR 5-5191

Shampoo it back to a soft, manageable crown of beauty with soft water—from the American-Standard water softeners!

Call today for free estimate! *standard inline installation

easy terms, low-cost loans available for F.I.A. financing

only \$29900 installed

Shampoo it back to a soft, manageable crown of beauty with soft water—from the American-Standard water softeners!

Call today for free estimate! *standard inline installation

easy terms, low-cost loans available for F.I.A. financing

only \$29900 installed

Shampoo it back to a soft, manageable crown of beauty with soft water—from the American-Standard water softeners!

Call today for free estimate! *standard inline installation

easy terms, low-cost loans available for F.I.A. financing

PROCLAMATION

WHEREAS, the civic bodies and service organizations of our community and the departments of the local government recognize the great service rendered to this community by the Chelsea Jayces, and

WHEREAS, The United States Jaycees and its affiliated state and local organizations have set aside the week of January 19-25, 1969, to observe the founding of the Jaycees and to commemorate such founding by the selection of an outstanding man in this community as the recipient of the Distinguished Service Award, and

WHEREAS, this organization of young men has contributed materially to the betterment of this community throughout the year,

THEREFORE, I, Donald Baldwin, president of the Village of Chelsea, do hereby proclaim the week of January 19-25, 1969, as JAYCEE WEEK and urge all citizens of our community to give full consideration to the future services of the Jaycees.

Dated: January 18, 1969.

Donald Baldwin,
Chelsea Village President.

Registration Blank

JAYCEE SHOOTING EDUCATION PROGRAM

(Name - Please Print) (Age)

I wish to learn more about the fun of shooting through the knowledge of good gun manners, safety procedures in gun handling and the fundamentals of marksmanship. I wish to enroll and will attend the preview presentation to be given Wednesday, Jan. 29 at 7 p.m. at Chelsea High school auditorium.

Signed _____

Parent's Signature _____

Address _____ Phone _____

(This enrollment form is to be turned in to Chelsea Drug or brought to the preview session.)

Lyndon Township Planning Board

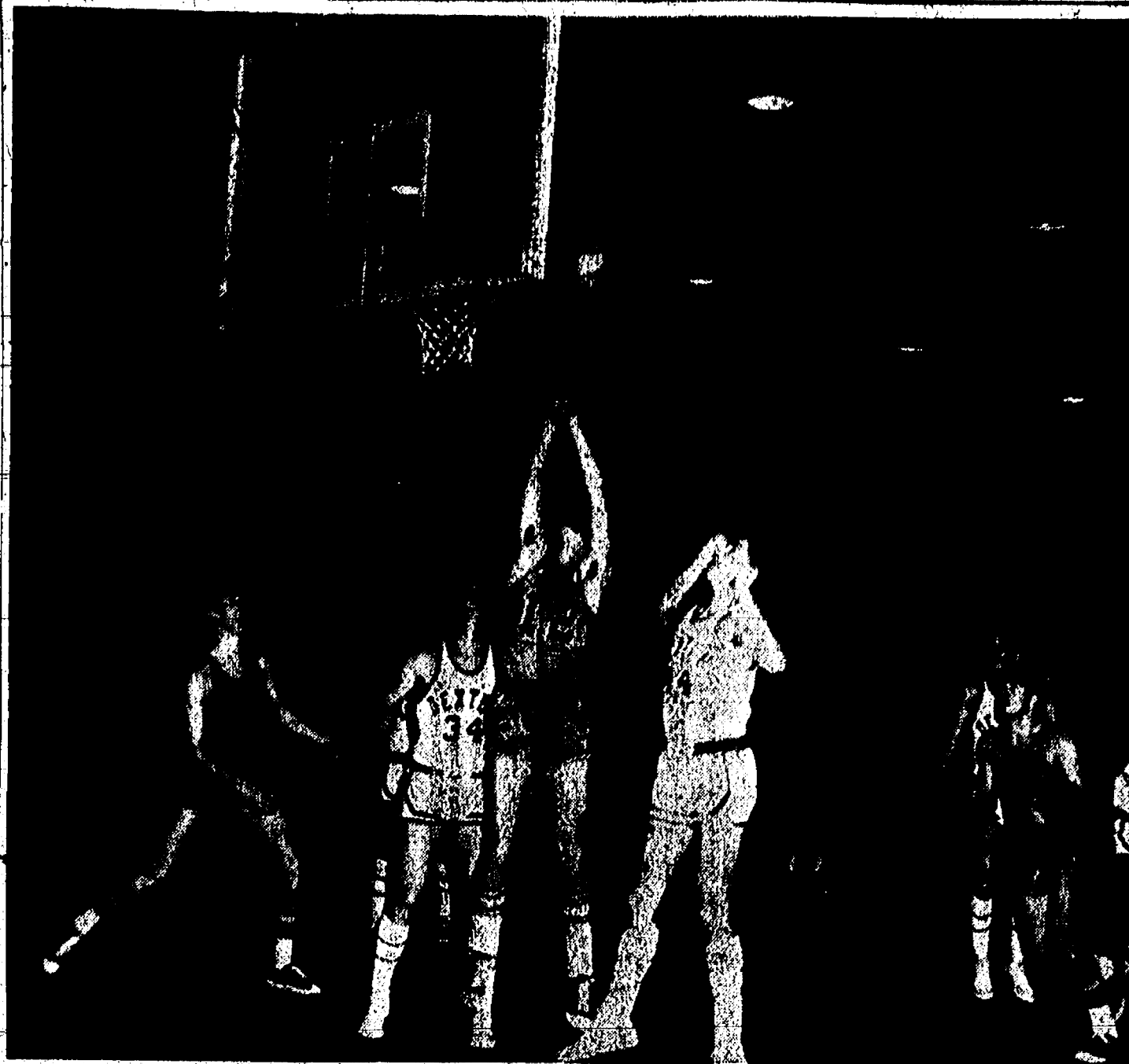
PUBLIC HEARING

Pursuant to the requirement of Act 168, P. A. 1959, as amended, Township Planning Commission Act, notice is hereby given that there shall be a public hearing held by the Lyndon Township Board on Jan. 22, 1969, at 8 p.m., in the Lyndon Township Hall on North Territorial Road, east of M-52 Highway in Lyndon Township, Washtenaw County, Michigan, for the purpose of hearing all persons interested in the General Land Development Plan, proposed Permanent Zoning Ordinance, Official Zoning District Map and the creation of a Planning Commission for Lyndon Township.

Copies of the resolution creating a planning commission, the zoning ordinance text, official zoning ordinance map and general land development plan are available for inspection at the Washtenaw County Metropolitan Planning Commission Office, located in Room 306, Washtenaw County Building Huron and Main Streets, Ann Arbor, Michigan.

LYNDON TOWNSHIP BOARD

MRS. DORIS FUHRMANN, CLERK



DAVE CONKLIN reaches over the heads of Chelsea was unable to pick up the 10 points by Drednaughts Friday night in an attempt to add which Dexter led during most of the game, to down the Bulldogs, 78-67, and create a three-way tie while Lance Burghardt approaches from left and co-captain Mike Schnadt zooms in from the right.

Distinguished Service Awards

(Continued from page one)

He was judged on the basis of progress in his agricultural career, extent of soil and water conservation practices and contributions to the community, state and nation.

Koenn has worked himself into a 50-50 work partnership with his father on their Hayes Rd. farm since entering farming after leaving college in 1965. He assumed the debt to bring the dairy farm operation up to a two-family business and plans to take over the complete operation in the future.

Koenn enjoys farming because it "is a career where one may experiment and be on his own." He carried out this appreciation for experimentation by using minimum tillage for planting and using a prescribed fertilization program.

He harvests high moisture shelled corn with a combine and stores it in a 100-ton silo. He employs a full line of modern churning and milking equipment.

Koenn and his wife, Margot, built and landscaped a new three-bedroom home two years ago on an acre purchased from his father. Koenn helped build a modern feed lot for dairy cows, including augers, and shed, plus a feed room to accommodate a roller mill.

Conservation is practiced on the Koenn farm, where complete soil testing is done every other year for fertilizer recommendations for specific crops. Crop rotation is practiced to control erosion and minimum tillage is used for corn planting. Thirty acres of wildlife are maintained for hunting and game watching pleasure.

Some of his community activities include membership in the Grange, Agriculture Advisory Council, Farm Bureau and director in the Chelsea Jaycees.

Koenn attended business college for two years and completed a two-year agriculture short course prior to entering farming.

Other candidates for the award were Reuben Lesser, Jr., and Lloyd Grau. Lesser, 30, farms 670 acres at 14140 Old US-12 with his wife, Bea Ann and two children. He was raised on a farm, participated in 4-H and FFA and began farming with the help of his father. He has experimented with spray corn without cultivation, plow and plant methods, built a hitch behind mower for conditioner and em-

ployed an airplane to apply rye. He added a shed, corn crib, trench silo and landscaped pond to his farm. Production of crops and beef cattle has increased many times over since he began farming in 1955.

Grau, 32, has been a farmer for eight years. He operates 300 acres at 3420 M-52 with his wife, Arlene and three children. During his farming career Grau modified the auger with which he feeds his lambs and experimented with chemical weed control. He had added loose housing, silo, feeders and a number of pieces of machinery and landscaped around buildings since entering a partnership with his father in 1961.

Richard W. Boss, 32, is controller at Dana Corp. He has a myriad of community activities including Community Chest campaign vice-chairman, director of the industrial division; president of Chelsea Recreation Council; Kiwanis Club director, chairman of Travel Series sales; and Stewardship chairman of St. Paul's church.

Boss was nominated by Walter Brown, who said that "Dick" is a dynamic, energetic individual who immediately started working for his church and community" after moving to Chelsea several years ago. Boss is married and has one child.

Daniel Murphy, pharmacist at Chelsea Drug, has served as Sylvan township clerk for several years; is a member of St. Mary church and Chelsea Knights of Columbus. Murphy, of 227 Washington, is a graduate of Chelsea High school and holds a BS degree in pharmacy from Ferris State College. He is married and the father of three children.

Richard A. "Bud" Ringe is owner of 3-D Sales & Service. He graduated from Chelsea High school, earned a degree in Business Management from Eastern Michigan University and was employed by Fortune Industries before starting 3-D in September, 1964. Ringe is a Chelsea Jaycee and was a member of the Industrial committee of the United Fund Drive last fall. He is married and the father of two children.

Community Chest

Annual Meeting

Postponed to Jan. 29

Chelsea Community Chest annual meeting has been rescheduled for Wednesday, Jan. 29.

New officers will be elected at the meeting, previously scheduled for Jan. 15. According to President Mrs. John Dettling, the meeting was postponed because of lack of a quorum of old members last week.

Police Chiefs Meet for Midwinter Conference

Chelsea Police Chief George Meranuck attended the midwinter conference of the Michigan Association of Chiefs of Police in Detroit, Jan. 16 and 17.

Approximately 180 police chiefs from Michigan met at the Howard Johnson Motor Lodge to hear discussions of various aspects of police work.

Included in the agenda were evaluations of MIN, crime data program and Lein, a computer system that stores information from various departments.

Captain Dan Myre discussed mobile crime, including the recent incidence of motorcycle crime. Police chiefs were informed of several schools already existing for their officers, introduced to a new police weapon and discussed the new district court system.

Subscribe Today to The Standard!

YES

WE ARE MAKING
LONG TERM FARM
REAL ESTATE
LOANS

SEE US



Ph. 663-6150 2221 Jackson Ave.
Ann Arbor, Mich. 48106
P. O. Box 1006

Ordinance No. 55

AN ORDINANCE TO AMEND THE PROVISIONS OF ORDINANCE NO. 55, AS AMENDED, KNOWN AS CHELSEA VILLAGE ZONING ORDINANCE, TO CREATE A PROCEDURE FOR A REQUIRED SITE PLAN REVIEW

The Village of Chelsea Ordains:

ARTICLE III USE AND DENSITY REGULATIONS

Article III of said Ordinance No. 55, as amended, is supplemented by the addition of a required Site Plan Review, as follows:

Section 3.01:1

REQUIRED SITE PLAN REVIEW

No construction or land use permit for full or partial development of any residential district, including both permitted uses as shown in the Table above, and related or equivalent uses requiring approval by the Zoning Administrator, shall be issued until the Developer shall first have submitted a site development sketch or plan of the proposed development to the Planning Commission and have duly received approval of the same.

Such site development plan or sketch shall be submitted to the Planning Commission at least thirty (30) days prior to application for a permit and it shall be of a comprehensive nature, showing all contemplated development and related details in sufficient scale, completeness and clarity as to enable the Planning Commission to reasonably assess adequacy of the proposed development as to matters of traffic, civic design and arrangement, population distribution and public facilities; public services and other present and future civic factors promoting the general welfare.

The failure of the Commission to act within thirty (30) days from and after the date of official submission to the Commission shall be deemed approval. The construction of single-family detached dwellings, where individually built by the owner exclusively for his and his family's use and occupancy, shall be exempt from the provisions of this section.

Section 3.02:1

REQUIRED SITE PLAN REVIEW

No construction or land use permit for full or partial development of any commercial or industrial district, including both permitted uses as shown in the Table above and related or equivalent uses requiring approval by the Zoning Administrator, shall be issued until the Developer shall first have submitted a site development sketch or plan of the proposed development to the Planning Commission and duly received approval of the same.

Such site development plan or sketch shall be submitted to the Planning Commission at least thirty (30) days prior to application for a permit, and it shall be of a comprehensive nature, showing all contemplated development and related details in sufficient scale, completeness and clarity as to enable the Planning Commission to reasonably assess adequacy of the proposed development as to matters of traffic, including ingress and egress and parking, fire safety, pollution, public utilities and other present and future civic factors promoting the general welfare.

The failure of the Commission to act within thirty (30) days from and after the date of official submission to the Commission shall be deemed approval. The construction of single-family detached dwellings, where individually built by the owner exclusively for his and his family's use and occupancy, shall be exempt from the provisions of this section.

ARTICLE VII

AMENDMENTS, VALIDITY

EFFECTIVE DATE

Section 4. All other provisions of said Ordinance No. 55, as amended, to remain in full force and effect and this Ordinance shall be effective twenty (20) days from the date of adoption and publication.

Dated: 21-January 1969

Don Baldwin, President

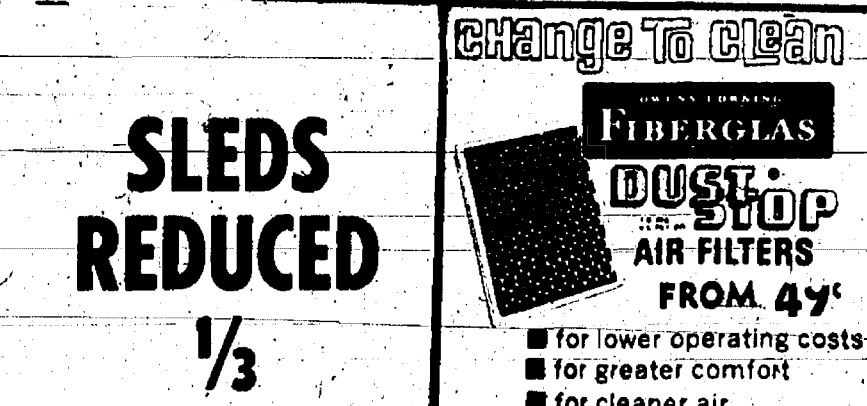
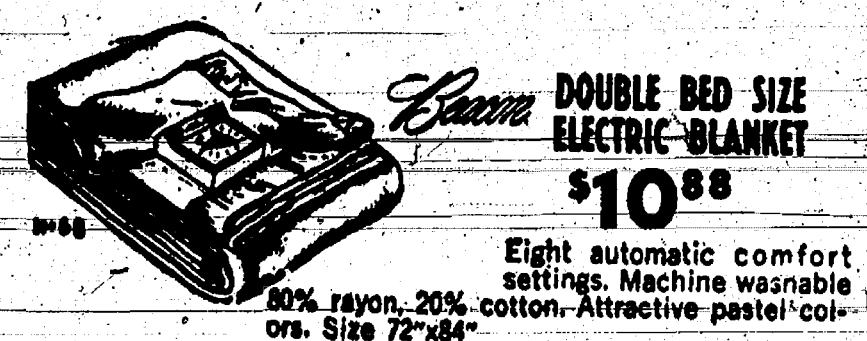
George L. Winans, Clerk

Village Tree Planting

Village residents who desire trees planted between the sidewalk and street should submit written requests to Gene Miller at 160 E. Summit. Residents of Lanewood No. 2 need not request trees until sidewalks are put in.

VILLAGE OF CHELSEA

GENE MILLER, TRUSTEE



WIN! 50 GLAMOROUS VACATIONS

ENTER FREE

Here is all you do to enter—No purchase required. Enter as often as you wish. Pick up free entry blanks and complete details at any PRO HARDWARE STORE listed below. Entry must be deposited by March 1, 1969. Void where prohibited by law. All federal, state and local regulations apply.

Residents of Wisconsin can mail their entries to their local PRO Hardware stores. Each entry must be mailed separately.

OFFICIAL ENTRY

WE WANT TO BE ON A ONE WEEK DISCOVERY TRIP TO ONE OF THE FOLLOWING PLACES: LAS VEGAS, SAN FRANCISCO, PHOENIX, NEW YORK CITY OR MIAMI

NAME _____

ADDRESS _____

CITY, STATE _____

DEALER _____

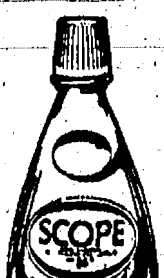
Chelsea Hardware
110 South Main St. Phone GR 9-5311

Be Budget Wise... Go Budget-Wise
THIS WEEK-END'S

DISCOUNTS



new! improved!
Hidden
magic



Family Size
Reg. \$1.45
\$1.19



Large Size 5-Oz.
CREAM JAR
Reg. \$1.85
\$1.49

BUDGET-WISE STORE

Chelsea's First Discount Store

116 South Main Street

Phone GR 9-1611

We Will Be
CLOSED
Mon., Tues., & Wed.,
Jan. 27-28-29

Open Again
Thursday, Jan. 30
New Hours:

8 a.m. - 12 Noon, 1 to 5 p.m.

Finkbeiner Lumber Co.

Phone Chelsea GR 9-3881

On Old US-12 Just off S. Main St.

MARTIN STEINBACH, Owner

Ads
Taken
Till 5 p.m.
Tuesday

IT'S EASY TO
BUY-SELL-RENT-
HIRE & FIND WITH



Just
Call
GR 5-3581

WANT ADS

The Chelsea Standard

WANT AD RATES

PAID IN ADVANCE—All regular ad. rates. 10¢ per line for 10 words or less. Each insertion. Count each figure as a word. For more than 10 words add 1¢ per word for each insertion. "Blind" ads or box numbers add 5¢ extra per insertion. CHARGE BY PHONE—Same as cash in advance, with 15¢ postage handling charge if not paid before 5 p.m. Tuesday preceding publication. For in advance, send cash or stamps and save 15¢. DISPLAY WANT ADS—Rate, \$1.19 per column inch, single column width only. 5-column and 10-column light type. CARDS OF THANKS or MEMORIALS—Single column, 10¢ per line for 10 words or less; 1¢ per word beyond 10 words. Minimum 1 line. COPY DEADLINE—5 p.m. Tuesday week of publication.

CAR RENTAL by the day, week, end, week or month. Full insurance coverage, low rates. Call Lyle Christwell at Palmer Motor Sales, GR 5-3271. 25¢
FOR SALE—63 LeMans, for parts, or will sell entire car. Needs some work. Ph. 479-6540. 30¢
SPOTS before your eyes—on your new carpet—remove them with Blue Lustre. Rent electric shaver, \$1. Dancer's, Chelsea. 31

REAL ESTATE

Need Listings

Lake Property - Farms
Vacant Parcels

LOCAL SALESMAN

H. T. HAYNES
18895 Sauer Drive, North Lake
Phone 475-7157
EDWARDS REAL ESTATE
AND INSURANCE
Phone 482-8870 81¢

SOFTEN THE NOISE, make it warmer, give it one fifth as much attention by carpeting your floor. See the latest styles from the best manufacturers at Merkel Brothers. Five credit plans. 32

REAL ESTATE

Do you want a home or cottage on a lake, a farm or country home, a building site? We have them.

Eugene R. Young,
Broker

Phone 878-3792
Mary Allen, 878-3826
Virginia Visel, 428-2224 30¢

JOHN WELTMITZ was appointed "SPECIAL AGENT" for Metropolitan Insurance in November, 1963. Over 30 years experience. Telephone 475-4431. 32

Big
January
CLEARANCE
SALE

at Dancer's
1/3 To 1/2 Off
ON
Winter Wear

ONLY 3 DAYS LEFT

MERKEL'S
Furniture Sale
Ends Sat., Jan. 25
HURRY IN! 31

WANTED TO BUY—Modern 3-bedroom home with attached garage. Call Ployd Uther, 475-7525. 32
WIDOW wants small furnished apt. in town. Call after 9 a.m. 665-0227. 31

WANT ADS

KNAPP SHOES For Cushion Comfort

At Factory to You Savings
For Appointment Call
Robert Robbins
475-7282
Authorized Representative 21¢

TRAVEL TRAILERS—13-ft. and up to 10x55 ft. trailers. John R. Jones-Trailer Sales, Gregory, Mich. Phone 498-2655. 45¢

SEE US for transit mixed concrete. Knapp Bros. Gravel Co. Phone Chelsea 479-2712, 4950 Loveland Rd., Grass Lake, Mich. 40¢

RUBBISH HAULING

Write
BILL MOUCH
19711 Doyle Rd., Gregory, Mich.
Phone Gregory 498-2652 32¢

CUSTOM SPRAYING—Voco interior white farm painting. J. L. Bird, phone 517-5477, Manistou Beach. 32¢

For your household and cosmetic needs call your
Fuller Brush Dealer
475-7130
426-8319 10¢

CLOGGED
SEWER

Reynolds Sewer
Service
To Clean Sewers Without Digging
Drains Cleaned Electrically
FREE ESTIMATES
2-YEAR GUARANTEE
Phone Ann Arbor NO 2-5277
Sewer Cleaning In Our Business—
Not a Sideshow 88¢

All Insurance Needs

In the convenience of your own home—by phone.

N. H. Miles, Allstate

Call GR 5-8334 after 5 p.m. 81¢

Lessons for All Band Instruments

Now available at
Al Nalli Music
Chelsea
475-7215 31

CARPET and FURNITURE SALE

ends Saturday, Jan. 25 at Merkel Brothers.
Free Real Estate classes. Art Daniels Realty, 7030 Dexter-Pinckney Rd., HA 6-4696. 31

Real Estate

18 ACRES only 3 miles out, large family country home. Modern, full basement, good land, reasonable terms.
191 ACRES, 12 miles from Ann Arbor. Large modern home, full basement, two large barns, tool shed, garage. Some of the best land in Freedom township, terms.
25 ACRES—fine home, completely modern kitchen, ceramic tile bath, large living room, 4 bedrooms, good land, terms. 31

Grass Lake Real Estate

Dial 479-5742
428-8120 Manchester
769-5630 Ann Arbor 33

CUSTODIAN WANTED

Couple to do janitor work at Chelsea Methodist church. Call Eldon Gorton, 479-5181 or the Rev. Worgess, 475-8119. 31

WANT ADS

PATRICK & COOK—Free estimates on aluminum siding, gutters, awnings, additions, roofing and general maintenance. Porch railing, aluminum storm windows and doors installed. Please call Chelsea 479-4533. 11¢

FACTORY HELP WANTED—All categories. Apply in person. Fortune Industries, 11770 Dexter-Chelsea Rd., Chelsea. 42¢

FOR SALE—Piano, call 479-8117. 81¢

FOR RENT—Country setting beautiful new duplex, furnished, one bedroom, dining, kitchen, living room, tile bath. Utility sliding glass doors to lovely patio at back. No children or pets. Ph. 426-8188. 27¢

VACUUM CLEANERS—Electrolux authorized sales and service. James C. Manchester, Ph. 428-2931 or 428-8221. 42¢

PIANO TUNING, Chelsea and area. Facilities for reconditioning and rebuilding. Used piano sales; reconditioned grades and verticals. E. Ekland, 426-4432. 50¢

WANTED—Steady employment driving ice cream truck and part-time plant work. Fine working conditions, good opportunity for veteran or man looking for change. Write Box SE 5, care of Chelsea Standard. 10¢

Evinger Real Estate

Phone 426-5833
or call Janice Fouth, 426-4751
FARMS—RESIDENTIAL
LAKE PROPERTY 30¢

FOR SALE

1-ACRE building lot, well located, in Sharon Township. Terms available. 2 LOTS on Spring Lake. MODERN 4-bedroom Chelsea home, 2-car garage. Excellent condition. NO RENTALS. SOLD OUT OF FARMS. Buyers waiting.

R. D. Miller
Real Estate Broker
GR 9-5892

15775 Cavanaugh Lake Rd., Chelsea, Mich.
Post Office Box 381
List your property with Miller. Fast, efficient service. Call Evelyn Abdon at 475-7651 after 5 p.m. 25¢

ONLY 3 DAYS LEFT MERKEL'S Furniture Sale Ends Sat., Jan. 25 HURRY IN! 31

Chelsea and Dexter Area Homes

HALF MOON LAKE—Modern 4-bedroom 5-year-old home with 3-room apartment upstairs. Recreation room with brick bar, open beamed ceiling and brick fireplace in front room; 2 full ceramic tile baths plus a half bath; 3-car garage; 4 lots. Beautiful lake view and access. 31

FARM HOME, 3 ACRES—This is a rare find. 4-bedrooms, Dexter schools. New furnace, 2-car garage. Approx. 10 miles from Ann Arbor. \$25,000. 31

CAVANAUH LAKE—2-bedroom year-round lake-front cottage. Fireplace, nice lot with trees, 50-ft. frontage. \$16,900. 31

CHELSEA HOMES—3-bedroom, \$18,500; 5-bedroom, \$21,500; 3-bedroom, \$14,000. FARMS from 10 acres to 412 acres. Many to choose from. 31

BUILDING SITES and LAND—1.5, 2.5, 6, 10, 40 acres and many more to choose from. 31

Eibler, Frisinger & St. Amour

REALTORS
Corner Old US-12 and Main St.
Chelsea - 475-8881
Dexter - 426-4059 31

Evenings:
Paul Frisinger 475-4864
Robert Thornton 475-8857
Herman Koenn 479-7252
Helen Weiss, 663-0160 31

Ladies' Snow Boots 1/3 Off at DANCER'S 31

HELLER ELECTRIC

Licensed Electrical Contractors
ALL TYPES OF WIRING
(No job too big or too small)
DAY OR NIGHT
CALL GR 9-3816
20640 Sager Rd., Chelsea 31



"I told my wife she couldn't hit the broadside of a barn with the BE gun our kid got in the Standard Want Ad!"

WANT ADS

FOR REAL DOLLAR SAVINGS
Be sure and see us before you buy any new or used car. Palmer Motor Sales, Inc. Your Ford Dealer for over 25 years. 2¢
BABYSITTER WANTED, in my home. Monday through Friday. Ph. 479-2074. 31

Real Estate Listings Wanted

FARMS, HOMES and
LAKE PROPERTY
GREAT LAKES
REAL ESTATE
Ph. 769-5590, Ann Arbor
Ph. 428-8120, Manchester 12¢

CULLIGAN

There are 2 young, strong men we will hire for healthy, fresh air jobs. (Not salesmen.) In return for a day's labor, we give high wages, uniforms, insurance, profit sharing, pension, bonus, and commission, etc. It adds up to an immediate, responsible opportunity. 2¢
2821 Jackson Ave.
Across From Veterans Park 11¢

FOR SALE—Year-old female German Shepherd, AKC registered, all shots, excellent with children. 475-4752. 15¢

FOR SALE—1955 4-wheel drive Jeep, new engine, 4-ton PTO winch. Ph. 479-1473. 20¢

TREE REMOVAL DONE—Also buyers of standing timber and walnut trees. Chelsea 475-7631. 84¢

Headquarters for Ball Band
Rubber Footwear

Foster's Men's Wear

COMPETENT 13-year-old girl would like babysitting jobs, early evenings, Saturday afternoons. Ph. 479-5883. 31

FIREWOOD FOR SALE—Pick-up or delivery. For further information call 475-7534. 31

FOR SALE—23-in. black and white console TV, \$25. Call 479-6931 after 6 p.m. week days. 31

FOR RENT—Second-floor 3-room apt. Utilities furnished. Adults only. Write Box JA-15 care 31

Large Modern Home Wanted

Have buyer for large modern home in excellent condition. Will pay up to \$50,000. At least 4 or 5 bedrooms, good basement. 31

Great Lakes Real Estate

DIAL 479-5742
428-8120 Manchester 33

Telephone Collector

Interesting, challenging work. Permanent and full time. ANN ARBOR CREDIT BUREAU NO 5-6173 31

Everybody's Happy

"Smiling Service" works two ways here. Try it and see!

You'll leave us smiling with satisfaction in our friendly, heads-up service. We'll be smiling with satisfaction in a new friend made.

JIM'S PURE SERVICE

Tires — Batteries — Tune-Ups — Brake Service — Wheel Alignment
PHONE 479-3541

WANT ADS

ATTENTION: Morality erects buildings all winter if you are in need of a commercial or agricultural building order before winter and want to save money. Quality materials and workmanship guaranteed. Call Petersburg 275-1855 collect or write to Box 84, Petersburg, Mich., for all your pole building needs see Morality Pole Builders today. 18¢

APTS. FOR RENT—Second-floor apt., furnished, for 2 persons; also very nice first-floor apt., with full basement, heat furnished. 479-5441 after 6 p.m. or all day weekdays. 22¢

WANTED TO BUY, spruce trees. Call 475-8120. 18¢

CAR & TRUCK LEASING. For details see Lyle Christwell at Palmer Motor Sales, GR 5-3271. 45¢

DANCER'S
BARGAIN FLOOR

1 lot
Men's or Ladies'
Cowboy Boots
Now 8.77
Were \$16.99
B Width Only 31

SWEET CIDER made fresh for the last time this season. A few Delicious and Jonathan apples left. Open weekdays 9-3 p.m., weekends noon to 6 p.m. Closed Wednesdays. CZAPLA'S ORCHARDS. 1817 Rank Rd. GR 9-6468. 32

HOUSES FOR RENT—Free rental service to landlords. Reliable tenants waiting. Art Daniels Realty, 7080 Dexter-Pinckney Rd., HA 6-4696. 31

REAL ESTATE
FOR SALE

4-BEDROOM HOME, 2 1/2 baths, large basement, gas heat. Large lot. 2-car garage. 31

4-BEDROOM HOME with basement, gas heat. On large lot. 2-car garage. 31

1 ACRE with 3-bedroom home. Modern kitchen, 1 1/2 bath, 2-car garage. Well landscaped. Aluminum siding. On black-top. 31

3 ACRES with 4-bedroom modern home. Needs some repairs and decorating. On black-top. 31

RANCH TYPE 3-bedroom home, 1 1/2 car garage. In Chelsea. 31

VACANT LAND

10 ACRES joining Village of Chelsea. 31

32 ACRES on Old US-12 west, joining Village of Sylvan. 31

Kern Real Estate

Phone 475-8563 31

ONLY 3 DAYS LEFT

MERKEL'S
Furniture Sale
Ends Sat., Jan. 25
HURRY IN! 31

WANT ADS

AIRLESS SPRAY PAINTING—Interior and exterior. Pinckney, 878-5245. 32¢
SOLID VINYL or aluminum siding. Aluminum gutter systems, storm windows & doors. Awnings. Call for free estimates including custom application. New or old homes. Curial home maintenance corp. Dave Edwards 6450 Conway Rd., Chelsea, Ph. 479-4331 6 to 9 p.m. 81¢

Headquarters for Ball Band
Rubber Footwear
Foster's Men's Wear 32¢

HAMMOND ORGAN teachers trained to teach their own homes. Call Gimbel Brothers, Ann Arbor, 488-5957. 34¢

THINKING ABOUT buying a chain saw? Stop out for a free demonstration of the powerful, light-weight Pioneer. District Sales and Service, 18100 M-22, Chelsea. 475-8150. 31¢

CARPET and FURNITURE SALE ends Saturday, Jan. 25 at Merkel Brothers. 31

BRIGHTEN YOUR KITCHEN and make cleaning easier with a new Armstrong Castilian vinyl floor. A 9x12 completely installed for \$85.00. See this new 12 ft. material at Merkel's. 32

G. G. HOPPER

Building Contractors
Phone GR 5-5551
Gregory 498-2148 40¢

Custom Slaughtering

By Appointment:
Complete Food and Meat Processing Service.
Frozen Food Lockers

Frigid Products

LOCKER DEPT.
Phone GR 5-8280 15¢

MEN'S

Clothing Sale
Sport Coats
Suits - Dress Slacks
20% Off
During January
Foster's Men's Wear 32

ONLY 3 DAYS LEFT MERKEL'S Furniture Sale Ends Sat., Jan. 25 HURRY IN! 31

Help Wanted

Saturdays only
MEN NEEDED
TO WAIT ON CUSTOMERS.
Chelsea Lumber
Company
Dial GR 5-8391 34

REAL ESTATE FOR SALE

NEW LISTING—Remodeled 2-bedroom older home. Large living room. New heating plant. 2-car heated garage. Extra large lot. \$18,500. 31

OWNER ANXIOUS TO SELL—Family home. Living room with fireplace, separate dining room, new kitchen, utility and 1/2 bath, all on first floor. 4 large bedrooms and full bath on second floor. Full basement. New gas furnace. \$28,000. 31

60-ACRE FARM with live stream, 4-bedroom house. Has bath and is structurally sound but needs some work. Cut stone smokehouse, barn and tool sheds. Good tillable land, \$50,000. 31

4-BEDROOM—Newer country home. 3-car garage. Brezeway, 2-acre lot. \$35,000. 31

BUILDING LOTS—1 acre at \$2,750. 10 acres at \$7,000. 15 acres, wooded at \$15,000. 31

CLARENCE WOOD

BROKER
645 Flanders St.
Phone 479-4603 31¢

HOUSES FOR SALE—2, 3, and 4-bedroom, newly decorated, \$49 down. We buy homes. Art Daniels Realty, 7080 Dexter-Pinckney Rd., HA 6-4696. 31

DANCER'S BARGAIN FLOOR

1 Lot
Men's Oxfords
Regular \$13.99
Sale \$8.77
Sizes are good now. 31

WANT ADS

Septic Tanks and Drain Fields

INSTALLED TO COUNTY CODE SPECIFICATIONS
Septic tanks from 500 gal. to 2,000 gal. available for prompt installation. 31

HILLTOP PLUMBING

BOB SHEARS
301 S. Main
Phone 479-5851 32¢

ARC WELDERS, accessories, battery chargers, air compressors. Twentieth Century is America's finest complete line. Free trial. Gambles. 31

USED TRACTOR TIRES—Large inventory on hand. Also used passenger - truck - grader tires. Jackson Tire Brokers, 44-105, Munnich, Mich. Ph. 596-2925. 32¢

A-1 USED CARS

'66 Ford Custom 500 4-door
'66 Chevy II Super Sport
'66 Fairlane 500 XL
'66 Galaxie 500 Convertible
'66 Thunderbird Hard Top
'66 Galaxie 500 4-door
'65 Mercury 2-door
'65 Ford 4-door
'65 Galaxie 500 2-door Hard Top
'64 Buick Convertible
'64 Ford 4-Dr. Hard Top
'64 Ford 6-Pass. Wagon
'63 Galaxie 500 2-door Hard Top
'63 Ford 2-door
'63 Falcon Wagon
'60 Ford 2-door 32

Trucks

'87 Chev. 1/2 Ton
'65 GMC Handivan
'60 Jeep with snow plow
'50 Ford Stake
'46 Chev Stake 32

REST
SELECTION
IN TOWN

PALMER FORD
Phone GR 5-8286
Open Mon., Wed. & Fri. Till 9:00 31

WANT TO TAKE guitar lessons? For further information call 479-5983. 31

COTTAGE FOR RENT—3-room, furnished, in Half Moon Lake area. \$100 month. Call OX 7-6874. 31

GOOD HOMES are needed for 3-month-old part-Siamese kittens. The kittens are very healthy and completely housebroken. Call 475-8831. 31

Highly Profitable Drive-In Restaurant Opportunity

Famous Dog n Suds Drive-In Restaurant chain has an excellent site available in Chelsea, Mich., where owner will build deluxe Dog n Suds Drive-In with inside seating and car canopies. Over 600 highly successful Dog n Suds in U.S. and Canada. No experience necessary. We provide the know-how and you're backed by advertising in Life & Look to assure success. \$12,000.00 cash required. For information brochure, write Wayne Newkirk, Dog n Suds, Inc., P.O. Box 73, (JH), Champaign, Illinois 61820 or phone 217-552-0081. 31

George's Shoe Repair Shop

(Above Hilltop Plumbing)
Mon. thru Friday
8 a.m. to 4:45 p.m.
Closed Saturday
HALF SOLES - HEELS
INSIDE STITCHING 31

CARPET and FURNITURE SALE ends Saturday, Jan. 25 at Merkel Brothers. 31

CARD OF THANKS

My thanks and sincere appreciation to all my relatives and friends, for all the acts of kindness expressed to me by gifts, cards, phone calls etc. during my stay at the hospital and since my return home.
Mrs. Margaret Birch. 31

Men's Clothing Sale

Sport Coats
Suits - Dress Slacks
20% Off
During January
Foster's Men's Wear 31

PUBLIC NOTICE

SYLVAN TOWNSHIP BOARD
PLANNING PUBLIC HEARING

Pursuant to the requirements of Act 168, P.A. 1959, as amended, Township Planning Commission Act notice is hereby given that there shall be a public hearing held by the Sylvan Township Board on February 4, 1969, at 7:00 p.m. in the Sylvan Township Hall, Sylvan Township, Washtenaw County, Michigan, for the purpose of hearing all persons interested in the creation of a Planning Commission for Sylvan Township. Copies of the resolution creating a Planning Commission, are available for inspection at the Sylvan Township Hall and at the Washtenaw County Metropolitan Planning Commission office located at Room 306, in the Washtenaw County Building, Huron and Main Streets, Ann Arbor, Michigan.

Sylvan Township Board

DANIEL J. MURPHY, Township Clerk

Standard Ads Are a Good Shopping Guide!

Lyndon Township Zoning Ordinance
PUBLIC HEARING

Pursuant to the requirement of Section 138, Act 184, P.A. 1948, as amended, the Township Zoning and Enabling Act, notice is hereby given that there will be a public hearing held by the Lyndon Township Zoning Board on Jan. 22, 1969, at 8 p.m. in the Lyndon Township Hall on North Territorial Rd. east of M-52 Highway in Lyndon Township, Washtenaw County, Michigan, for the purpose of hearing all persons interested in "General Land Development Plan" and proposed permanent "Zoning Ordinance" and "Official Zoning District Map" of Lyndon Township.

A copy of the zoning ordinance, map and plan, is available for inspection at the Chelsea State Bank and the Washtenaw County Metropolitan Planning Commission office, Room 306, Washtenaw County Building, Main and Huron Streets, Ann Arbor, Michigan.

Lyndon Township Zoning Board

CLARK BUSHNELL, CHAIRMAN

Girl Scouts

TROOP 98—Eleven girls from Troop 98 met Wednesday. The meeting was called to order by the leader, Mrs. Vercherian. Dues were collected by treasurer, Mary K. Slocum. Girls who were behind in dues were told how much. Mrs. Ewald, representing Kinder Klub, was present. We discussed badges, and broke up into patrols to continue the discussions. We had treat at closing and the girls were dismissed.

Mary Thomson, scribe.

Troop 47—Girl Scout Troop 47 met at the Congregational church Jan. 21. The meeting was opened by saying the Pledge of Allegiance. Newly elected officers include Debbie Conklin, Patrol No. 1 leader; Leslie Bury, Patrol No. 2 leader; Tammy Greenleaf, Patrol No. 3 leader; and Susan Barlow, Patrol No. 4 leader. The troop treasurer is Barbara Thomson and troop scribe is Karen Kern.

Leslie Bury brought treats. The meeting was closed with taps.

Saturday, Jan. 25 the troop will do "paint-up, fix-up" work at the Congregational church between 10 a.m. and 3 p.m. Members are to bring sack lunches.

Karen Kern, scribe.

TROOP 82—Twenty-nine members and one guest attended the Jan. 15 meeting of Girl Scout Troop No. 82. "The Green Giants" patrol No. 2 presented the flag ceremony. Vicki Walz was elected troop treasurer, and patrol treasurers were also elected. Mrs. Philip Roy discussed plans for troop badge work and presented badges and pins to several girls. Mrs. Carner Slocum, troop services director, was a surprise guest. She talked over many of the troop problems with us. The meeting closed with "Taps" and The Squeeze.

Twenty-four members attended the Jan. 8 meeting. Sue Schuelke, Kathy Pierce, Nancy Hepburn, Mary Beth Allen, Mary Hume and Robbie Navin presented the flag ceremony. Lorraine Clark and Yvonne Clark joined the troop. We elected Kathy Pierce and Robbie Navin as scribes. Patrols discussed badges while Mrs. Keith Schuelke and Mrs. Philip Roy held a Court of Honor with the patrol leaders. A Capers Chart was made up for January and February. Mrs. Schuelke brought treats.

Kathy Pierce, scribe.

Career Night

(Continued from page one)

Skilled Trades resource personnel will include Joseph O'Neal and Michael Turner, general contractors; Jerome Geisel, plumbing and heating; and Robert Steister, electrical; of Ann Arbor Contractors Association and O'Neal Construction Co.

A career in law enforcement will be explored by a Michigan State Police representative.

Food services will be covered by Emil Alpha, co-ordinator of food service at WCC.

Health services will include representatives Gerald Wood, co-ordinator, dental assistant program, WCC; Robert Nelson, instructor and co-ordinator, radiologic (X-ray) technology; Carl F. Hammond, instructor and co-ordinator, Inhalation therapy department, WCC; and John Shelton, director, Inhalation therapy department, St. Joseph Mercy Hospital.

A career in printing will be discussed by Harlan Roos of Edwards Brothers, Ann Arbor.

Representatives of the agricultural field will include Robert Paulsen, terminal programs, WCC; and Dr. Harold Becker, director, Institute of Agriculture Technology, Michigan State University.

Representing nurses, nursing aides and related hospital careers for males and females will be Ruth Stevens, director of nursing; and Carol Votruba, co-ordinator in-service training, St. Joseph Mercy Hospital.

Guidance counselors from each school will be present for questions, advice and discussions.

Guest speakers and counselors are invited to gather in the library at 9:45 for refreshments and an evaluation of the evening. The evening was organized by John H. Bowen, Chelsea counselor; George Bergman and Betty Ostrander; Duane Clark, Dexter counselor; Manchester counselor Philip Main; and Don Smith, Whitmore Lake High school.

CHS Evaluation

(Continued from page one)

program and make recommendations for improvement than many school surveys, which often rely heavily on outside consultants.

The evaluation will be an attempt to determine how well the school is achieving objectives it has set for itself. Students, teachers and parents will be involved at various stages in the evaluation. The school will carry out a follow-up survey of its graduates, analyze community resources, assess occupational intentions of seniors and determine the curriculum areas that are representative of better practice.

NCA accredited approximately 3,750 high schools within a 19-state scope. This represents approximately 40 percent of the total number of secondary schools in this region. Many schools are unable to meet membership criteria. Michigan chairman Dr. G. Sutherland Hayden has the responsibility of selecting team members for the Chelsea review.

Servicemen's Corner



SPEC-5 GARY GRABLE

Chelsea Woman's
Grandson at Ft. Bragg
After Duty in Vietnam

Spec-5 Gary L. Grable has resumed duties as a billeting clerk with the Special Forces Training Center at Ft. Bragg after spending a seven-day furlough with his parents, Mr. and Mrs. Harley Grable of 129 E. Southfield, Jackson.

His mother is the former Alfreda Marshall of Chelsea. A grandmother, Mrs. Lucy Denton, lives at 823 S. Main St., Chelsea.

Grable enlisted in the Army May 15, 1966 after graduating from St. John's Catholic High school in Jackson. He received basic training at Ft. Knox, Ky., and was given advanced training at Ft. Gordon, Ga. After four weeks of jump school at Ft. Benning, Ga., he was stationed at Ft. Bragg, N.C., from Nov. 4, 1966 to July 2, 1967. He was a personnel specialist with the 82nd Airborne Division.

After spending a 32-day leave with his parents and brother, Randy, he went to Vietnam for a one-year tour of duty. While there, he served at Tuy Hoa and Dak To with the 173rd Airborne Div. He returned home Aug. 14, 1968 and spent 30 days with his parents before reporting to Ft. Bragg, N.C.

While Spec-5 Grable was in Vietnam he was awarded the Army Commendation, Bronze Star and Combat Infantry Badge for service on Hill 875 at Dak To.

34 Years Ago...

(Continued from page two)

Habit, secretary; directors, John Widmayer, Carl Geiger, George Loeffler.

Chelsea swamped St. Mary's of Adair last Friday night on the local court. The Chelsea lads completely outclassed their rivals in all departments. St. Mary's played the roughest game ever presented by a high school team on the local floor. High scorer was C. Panarites with 14 points, followed by Allshouse, with 7.

BOWLING

Senior House League
Standings as of Jan. 20

	W	L
Parish Cleaners	48 1/2	23 1/2
Seitz's Tavern	48	32
Chelsea Grinding	47	33
G. E. Boys	46 1/2	33 1/2
Spaulding Chevrolet	40	34
Wolverine Tavern	41	39
Schneider's Market	38 1/2	41 1/2
Sylvan Center	38 1/2	43 1/2
Murphy's Barber Shop	36	44
Dana No. 1	33	47
Dana No. 2	32	48
Wonder Bar	19	61

200 games and over: W. Moats, 248-287; M. Poertner, 200-221-221; R. Fike, 213-208; W. Griffith, 202; A. Peterson, 201; L. Hocking, 200; G. Linebaugh, 238-201; R. Hutzler, 212; R. Knickerbocker, 201-223; V. Harley, 200; J. Warmingham, 230; C. Schneider, 211; G. Padgham, 235-222; L. Hess, 205; L. Keezer, 205; D. Bauer, 202; E. Keezer, 204; R. Maurer, 233; R. Spaulding, 200.

600 series and over: W. Moats, 870; M. Poertner, 842; G. Linebaugh, 619; G. Padgham, 614; R. Maurer, 613.

500 series and over: W. Griffith, 541; R. Fike, 592; G. Miller, 529; A. Peterson, 552; L. Hocking, 533; A. Harmon, 524; J. Harook, 511; R. Hutzler, 551; G. Knickerbocker, 535; R. Knickerbocker, 513; J. P. Fahrner, 511; J. Gaken, 513; J. Jones, 517; V. Harley, 514; J. Warmingham, 551; C. Schneider, 556; G. Lawrence, 526; T. Wisniewski, 521; 526; W. Brown, 532; L. Hess, 571; L. Keezer, 547; D. Bauer, 565; E. Keezer, 519; R. Bauer, 529; J. Myers, 500; O. Kruse, 518; T. McClear, 540; W. Eisenbeiser, 545; A. Clemes, 503.

Chelsea Women's
League

Standings as of Jan. 15

	W	L
Chelsea Lanes	48 1/2	23 1/2
Chelsea Cleaners	47	25
Chelsea Milling	43	25
Foster's	40	32
Chelsea Grinding	39 1/2	32 1/2
Wolverine	39	33
Jiffy Mixers	38	33
Dancer's	30	42
Palmer's	28 1/2	43 1/2
Zephyr	28	40
Schneider's	26 1/2	45 1/2
The Pub	19	53

450 series or better: D. Judson, 501; B. Fike, 458; L. Orlovski, 458; S. Klink, 487; L. Stewart, 531; V. Guest, 530; D. Miller, 466; H. Morgan, 482; A. Alexander, 469; M. E. Sutter, 460; D. Alber, 543; G. Baczynski, 479; D. Graden, 499; L. Foster, 456; B. Parish, 480; R. Hummel, 519; N. Kern, 498; S. Ringe, 470; H. Ringe, 469; Kay Buss, 468; D. Sannes, 498; S. Timmerman, 511; M. Ritter, 492; P. Shoemaker, 506; P. Poertner, 509; 150 games or better: D. Judson, 187-169; P. Borders, 153; B. Fike, 162-170; L. Orlovski, 163; J. Fahrner, 170; D. Fouty, 151-161; S. Klink, 214-158; L. Stewart, 177-177; V. Harvey, 151; V. Guest, 157-192-190; D. Miller, 170-157; A. Turner, 150-159; H. Morgan, 188-161; A. Alexander, 127-178; M. E. Sutter, 169; D. Alber, 177-174-192; A. Bhami, 153; G. Baczynski, 160-171; D. Montgomery, 164; D. Graden, 150-157-192; J. Kaden, 170; C. Stoffer, 152; L. Foster, 158-164; R. Lutovak, 158-187; B. Parish, 150-156-154; R. Hummel, 194-164-161; A. Eisele, 188; P. Wurster, 158; A. Knickerbocker, 188; N. Kern, 193-160; S. Ringe, 150-192; B. Tirb, 174-155; H. Ringe, 173; M. Paul, 152; Kay Buss, 168-157; D. Sannes, 168-175-155; Karen Buss, 155; S. Timmerman, 172-202; M. Ritter, 150-177-155; R. Johnson, 175-161; C. Hansen, 151; P. Shoemaker, 170-193; P. Poertner, 174-224-201.

THANK YOU

We wish to express our sincere thanks to all friends, neighbors for the flowers, cards and gifts they sent to my husband at the hospital. We also wish to thank the Sunday school, senior choir, men of the church and Women of Zion for all the gifts and cards they sent. Especially we want to thank pastor John R. Morris for his wonderful visits, comforting words, and prayers, while my husband and our father was in the hospital and home.

Mrs. Carlton Burkhardt and Gary Mr. and Mrs. Ronald Burkhardt Mr. and Mrs. Robert Vedder and Brenda.

Farm Bureau's
HOMEOWNERS
Policy...

Covers Less Than
Covers More

- Home and Garage
- Personal Property
- Theft
- Personal Liability

Contact me today!

DAVID B. ROWE

157 E. Summit St., Chelsea

PHONE 475-8065

FARM BUREAU

INSURANCE

Company of Michigan

SEALTEST
Quality Dairy ProductsFor
HOME DELIVERY

PHONE 429-4294

Gordon L. Macomber

TODAY'S THOUGHT

By LOUIS BURGHARDT

A reader wrote the following letter with permission to publish it. It is extremely interesting with a timely thought. Read it—

If Moses appeared on earth today, he could easily transcribe the historical recounting and warning written in Deuteronomy 8:1-20. He could properly say to present day society, "Remember, Americans, all the way the Lord, thy God led thee all these years from 1620 to the present. Remember how He led you across the ocean to carve out a home land in the wilderness; how He made you endure that first hard winter. Remember how He later guided you through the struggle for freedom, when brave men died in a hard long war, so other men might raise a flag in liberty. Remember, God gave you a good land with lakes and rivers, filled with fish; mountains and valleys filled with game, coal, oil, metal and minerals, everything needed for a land of plenty. Remember, He gave you plentiful food; remember you now have fine air-conditioned homes, one or more cars per family, radio, color TV and abundant luxuries beyond any other nation on earth."

Part two of this meaningful letter will appear here next week with an interesting conclusion. Watch for it. Don't miss it! ... BURGHARDT FUNERAL HOME, 214 East Middle St., Chelsea, Mich. Phone GR 5-4141.

—SPECIALS—

ALL FLAVORS MILLER'S

Ice Cream . . . 1/2 gal. 69c

12-OZ. PKG. ECKRICH

Smokees Sausage . . . 59c

PKG. OF 6 KELLOGG'S

Pop Tarts 34c

NO. 2 1/2 CAN HUNT'S

Pears 2 for 79c

22-OZ. BOTTLE SWEETHEART

Liquid Soap 29c

KUSTERER'S
FOOD MARKET

DIAL OR 9-3331 WE DELIVER



ANY TRIP YOU MAKE will be more pleasant, if the car you drive is financed the Bank Way—economically, conveniently and with local people.

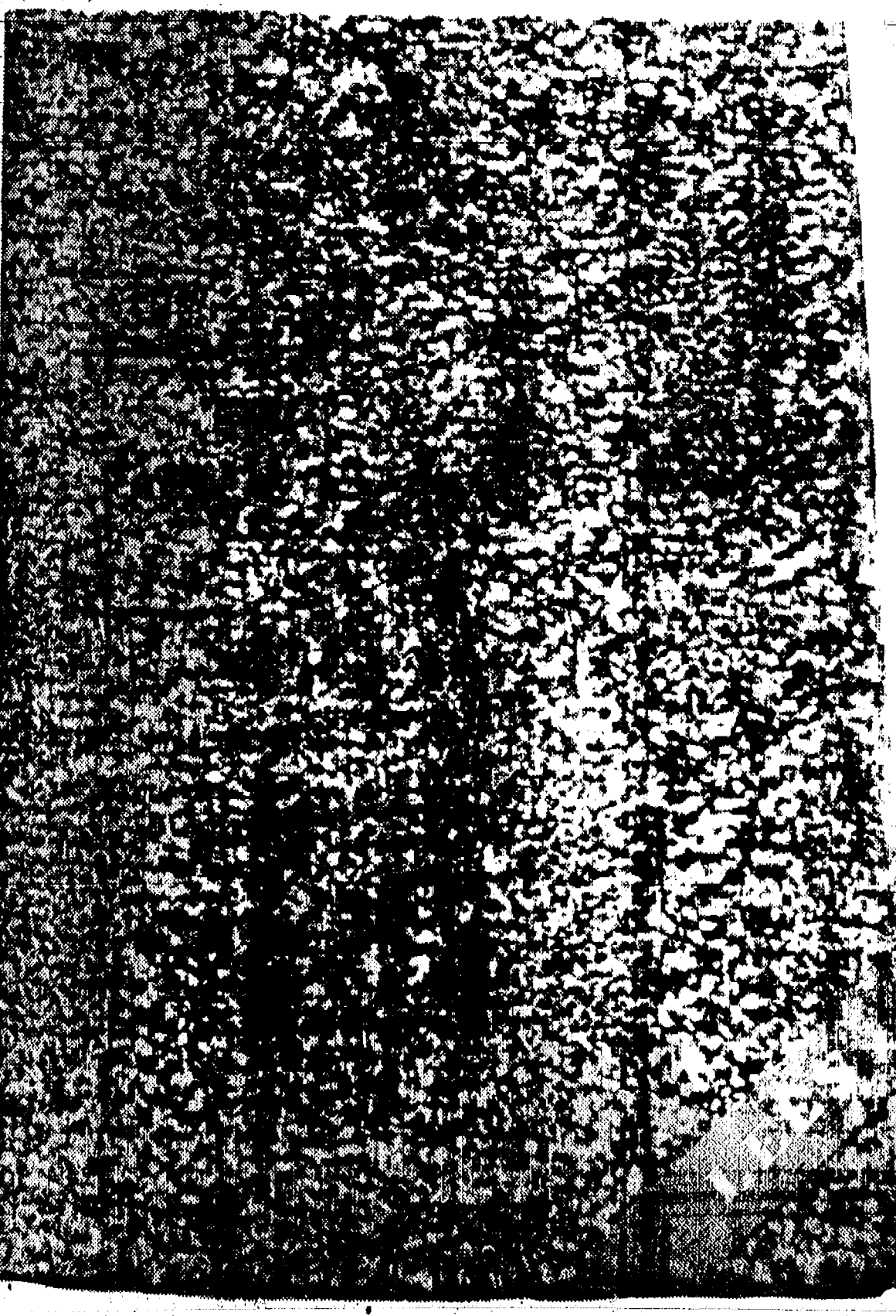
5% on Certificates of Deposit
4% on Savings Passbook Accounts

CHELSEA STATE BANK

Member Federal Reserve System

Member Federal Deposit Insurance Corp.

Sale Ends Saturday, Jan. 25



Carpets LAUREL RIDGE: This rugged nylon carpet with a multi-level tip sheared texture is available in a wide assortment of rich color combinations. **\$7.95** per sq. yd.

13 Colors in 12 and 15 ft. Widths.
**SPECIAL SAVINGS DURING
OUR JANUARY CLEARANCE**
MERKEL BROTHERS

Save money by spending enough.
Dutch Boy SATIN EGGSHELL THE KID-PROOF ENAMEL

The cost of painting a house or a room isn't all in the paint. A lot of money goes for labor, trouble and time, even if you do it yourself. So it makes sense to pay a little more for the paint you buy, to lengthen the time between paint jobs and save all those other costs. The quality of Dutch Boy Paints keeps them looking good longer. That's why millions of homeowners are willing to pay more for Dutch Boy. That's why you should, too. Spend a little more and save a lot. Buy Dutch Boy quality.



Use Satin Eggshell where your "finger-print experts" like to play. A simple scrubbing will bring it back to a like-new appearance. Puts a tough, durable finish on wood work and trim, doors, cabinets, bathroom and kitchen walls, anywhere extra protection is needed. Goes on quickly, without brush marks, and covers old colors easily. Comes in colors to match your wall paint. Get good old reliable Dutch Boy Satin Eggshell enamel.

MERKEL BROS.

Community Calendar

Church-wide School of Missions, First Methodist church of Chelsea, Sunday, Jan. 28 at 5:30 p.m. Speaker: Daniel Burke from Canterbury House, Ann Arbor. Young people invited, child care provided for small children. Sandwiches and dessert.

March 19 has been set for the spring Salad Luncheon given each year at the Congregational church, adv31

Kinder Klub Jan. 28 at home of Mrs. George Miller, 746 p.m. Speaker: Mrs. Fred Arnold from Cancer Society. Mrs. Fred Hoffman co-hostess. Bring wrapped "white elephant."

Olive Lodge No. 156 F&M special communication Jan. 28, 7:30 p.m.

Teen-Age Girls Admit to Charge Of Shoplifting

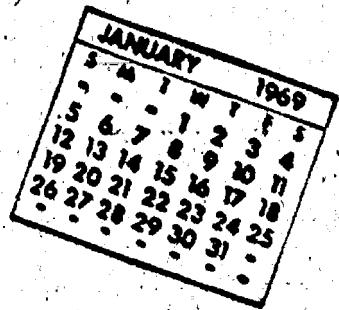
Four teenage girls have been released to their parents after admitting to Chelsea police they had taken three sweaters from Vogel's and Dancer's Department Stores in Chelsea Tuesday afternoon last week.

Chelsea police received a report from a citizen who overheard comments pertaining to their activities between the girls.

Two of them admitted taking three sweaters from the stores when questioned again Wednesday, after police found clothing tags in a rest room nearby. A third admitted that she was wearing one of the stolen items when police questioned them Monday.

Since none of the youngsters had a police record the case probably will not go to Juvenile Court. However, shoplifting is technically simple larceny and could have given the girls a police record.

A good neighbor is one who loans but never borrows.



VFW Auxiliary social meeting at home of Mrs. Wayne Harvey Monday, Jan. 27 at 8 p.m. Guests are invited.

The scheduled meeting of Past Presidents of the Woman's Relief Corps postponed. Date to be announced later.

Action Group of Chelsea Methodist church bake sale at Sylvan Town Hall, 9 a.m. through noon, Feb. 1.

Modern Mothers Child Study Club Jan. 26 at home of Mrs. Clarence Wask. Mrs. Richard Stahl and Mrs. William Clark as co-hostess. Guests welcome. "Child Molesting" film by state police.

Washtenaw Southwestern Denary, Archdiocese of Detroit, Sunday, Jan. 28, 2:30 p.m. Immaculate Conception church, Milan. Good Samaritan and Catholic Social Services speakers.

The Council on Adoptable Children (COAC) will hold its January meeting at 8 p.m. on Friday, Jan. 24 at the Church of the Good Shepherd, 2145 Independence Blvd. Ann Arbor. A panel of white parents who have adopted dark children will discuss their experiences in raising children of another color. Everyone is welcome!

Cards every Thursday afternoon at Korner House.

Inquiries regarding the Chelsea blood bank may be directed to Harold Jones of Central Fibre Products in the event that Mrs. Dudley Holmes is unavailable.

American Legion and Auxiliary hospital equipment available by contacting either Mr. or Mrs. Eugene Martin, at 475-5867 after 4 p.m.

TOPS club every Wednesday from 12:30 to 2:30 p.m. in the Rebekah hall. Call GR 5-8952. For night meeting call GR 9-3261.

DEATHS

Mrs. Claude Husband Former Pontiac Resident Dies at Methodist Home

Mrs. Mary M. Husband, 79, a resident of the Chelsea Methodist home, died at the home Saturday Jan. 18 after a long illness. She had been a resident of the home since March 4, 1961.

She was born June 30, 1889 in Big Rapids to Frank and Annette Lansing Van Orden. She was married to Claude C. Husband on June 3, 1909. He died Dec. 14, 1949. Mrs. Husband had been a member of Central Methodist church in Pontiac. The only survivors are two nieces, Mrs. Eva Amburn of Pontiac and Mrs. William J. Berg of Grand Rapids.

Funeral services were held at 10 a.m. Tuesday, Jan. 21 at the Methodist Home Chapel with the Rev. William Johnson, chaplain of the home, and the Rev. Carl Price of Pontiac officiating. Burial followed at 1 p.m. Tuesday at Perry Mount Park Cemetery, Pontiac. Arrangements were made by Burghardt Funeral Home.

Gottlieb Rothman

Former Waterloo Area Farmer Suffers Fatal Attack

Gottlieb R. Rothman, 80, former Grass Lake area farmer, suffered a fatal heart attack Sunday, Jan. 19.

Rothman was born March 15, 1888 in Millerstown, Ind., to William and Christina Gretzinger Rothman. He married Lillie Kate Bartig Feb. 25, 1920.

The couple farmed on Seymour Rd., Grass Lake near Waterloo village, for many years. After the death of his wife Dec. 30, 1967, Rothman moved to the home of his daughter, Mrs. Willard Ponton in Ann Arbor. He was a member of Chelsea Baptist church.

Survivors include four daughters: Mrs. Willard (Katherine) Ponton of Ann Arbor, Mrs. Minor (Jennie) Brand of Metamora, O., Mrs. Henry (Emily) Vsetula of Lainsburg and Mrs. William (Doris) Claydon of Pontiac; and 16 grandchildren. An infant son predeceased him in death June 25, 1925.

Funeral services were held 2 p.m. Wednesday at the Caskey Funeral Home in Stockbridge with the Rev. Elmer Steenson officiating. Burial followed at Mr. Hope Cemetery, Waterloo.

Volunteers included Dr. Claves, Dr. Btsford, Mrs. J. Wilbert Smith, Mrs. Tlovi Rihimaki, Mrs. Skeets, Worden, Mrs. Thelma Franklin, Mrs. Richard Ringer, Mrs. Leslie Eisenbeiser, Mrs. James Daniels, and chairman of the clinic Mrs. Chester Keizer.

Pauline McKenna of the Ann Arbor Red Cross Headquarters said that clinics held almost every day have eased the critical blood shortages that caused hospitals to postpone surgery last month.

Freshman R. Sweeney Promoted to Varsity

Chelsea freshman Ron Sweeney has just become the latest addition to the varsity basketball team.

Sweeney, 6'1", began the season on the frosh team, was advanced to the JV team where he again insisted on displaying excellent shooting and physical strength, and has now been added to the varsity Bulldogs.

Sweeney is expected to be an asset to the varsity team for a number of years. His game scores hover around the 20-point mark.

Freshman pacesetter Jeff Hughes will replace Sweeney on the JV team.

Kidney Donors...

(Continued from page one)

by receiving treatments on a kidney machine while waiting eight months for acceptable donated kidney. He received on kidney from a young boy in May, 1967 at the Cleveland Clinic, where he remains hospitalized.

His mother, Mrs. LeRoy Lamb of Manchester, said doctors indicated that he might be able to return home in March. His transplanted kidney is now functioning effectively after a rejection threat was overcome.

Potential donors in pledging kidneys should contact Weir at 475-7500.

700 babies are born with birth defects in the U. S. every day, says the March of Dimes.

A son, Dean Allan, to Mr. and Mrs. Aldean Guenther, 4000 M-52.

A son, Robert Paul, Jan. 19, to Mr. and Mrs. Willie R. Lemaster.

A son, Steven Dudley, Jan. 21, to Mr. and Mrs. Dudley N. Matties, Jr.

A son, Steven Dudley, Jan. 21, to Mr. and Mrs. Dudley N. Matties, Jr.

A son, Steven Dudley, Jan. 21, to Mr. and Mrs. Dudley N. Matties, Jr.

A son, Steven Dudley, Jan. 21, to Mr. and Mrs. Dudley N. Matties, Jr.

A son, Steven Dudley, Jan. 21, to Mr. and Mrs. Dudley N. Matties, Jr.

A son, Steven Dudley, Jan. 21, to Mr. and Mrs. Dudley N. Matties, Jr.

A son, Steven Dudley, Jan. 21, to Mr. and Mrs. Dudley N. Matties, Jr.

A son, Steven Dudley, Jan. 21, to Mr. and Mrs. Dudley N. Matties, Jr.

A son, Steven Dudley, Jan. 21, to Mr. and Mrs. Dudley N. Matties, Jr.

A son, Steven Dudley, Jan. 21, to Mr. and Mrs. Dudley N. Matties, Jr.

A son, Steven Dudley, Jan. 21, to Mr. and Mrs. Dudley N. Matties, Jr.

A son, Steven Dudley, Jan. 21, to Mr. and Mrs. Dudley N. Matties, Jr.

School Board Briefs

At a Board of Education meeting Jan. 20, present were Irwin, Lancaster, Taylor, Lewis, Koenig, Hopkins, Superintendent Cameron, Business Manager Mill, Principals Lane, Wojcik and Benedict and Assistant Principal Galbraith, as well as guests Ronald Milligan and James Hoffmeyer.

The meeting was called to order by President Irwin at 8 p.m. The minutes of the Jan. 6 meeting were approved as read. The treasurer's report was accepted as presented.

A motion by Lewis, supported by Lancaster, to pay general fund bills of \$15,408.15 received all ayes.

Discussion was held regarding the negotiation of a new contract between Chelsea School District Board of Education and the Chelsea Education Association.

A motion by Lewis, supported by Hopkins, to waive the 180-day limit in the master contract to ask for a reopening of the present contract with the CEA received ayes from Lancaster, Taylor, Lewis, Hopkins, Irwin; nay from Koenig.

A motion by Hopkins, supported by Taylor, to hold an operating millage election May 5, or as close to that day as is possible, received all ayes.

Superintendent Cameron has been appointed to the Board of Directors of Michigan Classroom Television.

Dies in Grosse Pointe

Ray Grindle, of 920 Beaconfield, Grosse Pointe, died Jan. 16. Grindle was a Chelsea area resident for many years before retiring to Grosse Pointe several years ago. Funeral services and burial were in Pennsylvania.

ATHLETIC EVENTS OF THE WEEK FOR CHELSEA HIGH SCHOOL

Thursday, Jan. 23— Junior High Basketball at Brighton, at home, 4 p.m. Freshman Basketball at Lincoln, 6:30 p.m. Wrestling at Lincoln, 8 p.m.

Saturday, Jan. 25— JV and Varsity Basketball at Manchester, 6:30 p.m. Wrestling at Howell, invitation only, all day.

Tuesday, Jan. 28— Freshman Basketball at Stockbridge, at home, 7 p.m. Junior High Basketball at South Lyon, at home, 4 p.m.

Wednesday, Jan. 29— Junior High Basketball at South Lyon, at home, 4 p.m.

Thursday, Jan. 30— Junior High Basketball at South Lyon, at home, 4 p.m.

Friday, Jan. 31— Junior High Basketball at South Lyon, at home, 4 p.m.

Saturday, Feb. 1— Junior High Basketball at South Lyon, at home, 4 p.m.

Sunday, Feb. 2— Junior High Basketball at South Lyon, at home, 4 p.m.

Monday, Feb. 3— Junior High Basketball at South Lyon, at home, 4 p.m.

Tuesday, Feb. 4— Junior High Basketball at South Lyon, at home, 4 p.m.

Wednesday, Feb. 5— Junior High Basketball at South Lyon, at home, 4 p.m.

Thursday, Feb. 6— Junior High Basketball at South Lyon, at home, 4 p.m.

Friday, Feb. 7— Junior High Basketball at South Lyon, at home, 4 p.m.

Saturday, Feb. 8— Junior High Basketball at South Lyon, at home, 4 p.m.

Sunday, Feb. 9— Junior High Basketball at South Lyon, at home, 4 p.m.

Monday, Feb. 10— Junior High Basketball at South Lyon, at home, 4 p.m.

Tuesday, Feb. 11— Junior High Basketball at South Lyon, at home, 4 p.m.

Wednesday, Feb. 12— Junior High Basketball at South Lyon, at home, 4 p.m.

Thursday, Feb. 13— Junior High Basketball at South Lyon, at home, 4 p.m.

Friday, Feb. 14— Junior High Basketball at South Lyon, at home, 4 p.m.

Saturday, Feb. 15— Junior High Basketball at South Lyon, at home, 4 p.m.

Manchester, Dexter License Plate Sales Set

Again this year the Chelsea branch of the Secretary of State will travel to the neighboring communities of Dexter and Manchester for the purpose of issuing license plates for those area's residents.

The schedule this year will be as follows: Jan. 26, Tibb Chevrolet Sales, 131 Adrian St., Manchester; Feb. 8, Frank Grohs Chevrolet, 7120 Dexter-Ann Arbor Rd., Dexter; Feb. 15, Tom Marshall Ford, 512 W. Main St., Manchester.

Hours will be from 1 p.m. to 4:30 p.m. on each date.

Wallace Wood, Chelsea branch manager, says that delays in issuing the 1968 plates can be avoided by following a few simple rules.

1) Sign the new registration on the reverse side, especially in the center of the right hand section.

2) If the vehicle is insured, be sure that you have CURRENT certificate of insurance, showing an expiration date sometime in the future.

3) If you do have a new registration that was mailed to you from Lansing, be sure it is complete, including the expiration date of your insurance coverage.

4) The driver's license number of the first named owner of the vehicle should be written at the bottom of the left hand section, as indicated.

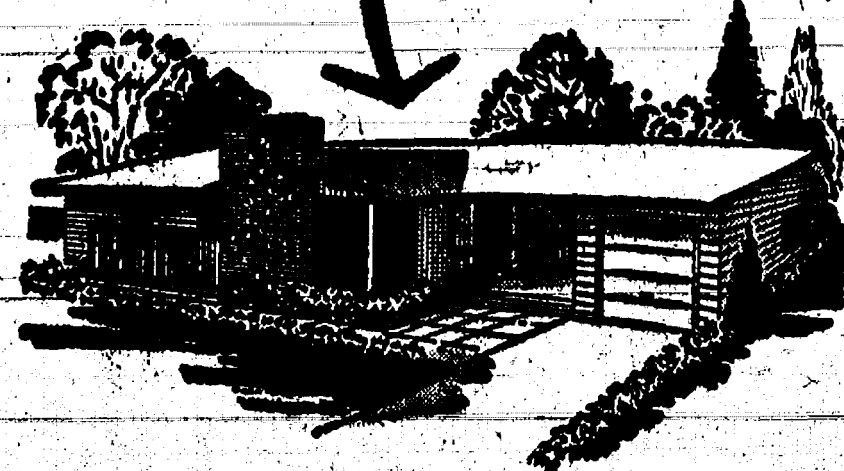
5) Bring your 1968 registration for verification.

School Supt. Cameron Chosen to Board of Classrooms Television

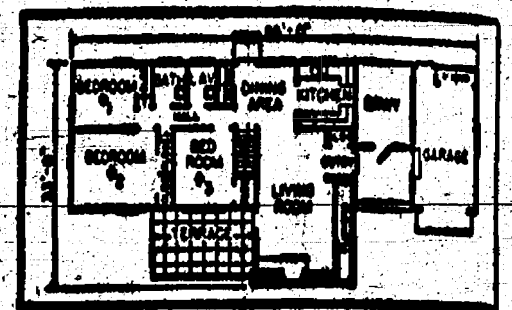
Chelsea School District Superintendent Charles Cameron has been appointed to the board of directors of Michigan Classrooms Television, an organization that prepares and tapes special programs for elementary school children in Michigan.

Cameron is one of a number of superintendents in the state who will meet four times each year to evaluate the success of the program and determine how improvements will be made.

IS THIS YOUR New Home?



LEARN HOW EASILY YOU CAN BUILD THIS Beautiful New Home



Please! Don't Grow Old Renting A House

OR Making Those Payments on a 60-year old relic LIVE A LITTLE!

★ For those with a Sizeable Down Payment

- ✓ You are in a position to command the LOWEST PRICES available anywhere—and we can give them to you. Our Cash and Carry prices will compete with any lumber yard within 50 miles.
- ✓ We deliver FREE at these prices on orders of \$100 or more.

★ For those with a Minimum Down Payment, but who possibly may own a lot

- ✓ You must be willing to work, and with our help, to plan the construction of YOUR NEW HOME
- ✓ Any work you feel you cannot do can be hired done, but you must contribute enough hours to offset the shortage in down payment.
- ✓ We will finance all of your construction costs and will guarantee you enough materials to build your new home.

COMPARE THIS "Package House" Plan WITH ANY OTHER AND YOU'LL BELIEVE

- ✓ We finance it.
- ✓ You make no payments until the house is completed.
- ✓ You choose your own subcontractors.
- ✓ We furnish the materials.
- ✓ Our staff will advise you and answer all of the questions that will come up during the construction.

★ BUT... A FEW WORDS OF CAUTION...

- ✓ You must contribute some value—either a moderate down payment, or some equity in an older home, or a lot on which to build the house.
- ✓ You must be ambitious and willing to work.

★ OUR "PACKAGE HOUSE" INCLUDES ALL of the materials you will need... from basement blocks to door knobs... from floor beams to kitchen cabinets, and to make the work easier for you,

We furnish:

- ✓ 2x4 studs all pre-cut to length.
- ✓ Thermopane window units pre-assembled, ready to set in.
- ✓ Pre-cut roof trusses—ready to set in place.
- ✓ A garage door installed for you.
- ✓ Pre-hung doors.
- ✓ Factory-made kitchen cabinets and counter tops.

Come in and Plan with Us So You, Too, Can Be Ready This Spring

CHELSEA LUMBER CO.

"Where the Home Begins" Phone GR 5-3591

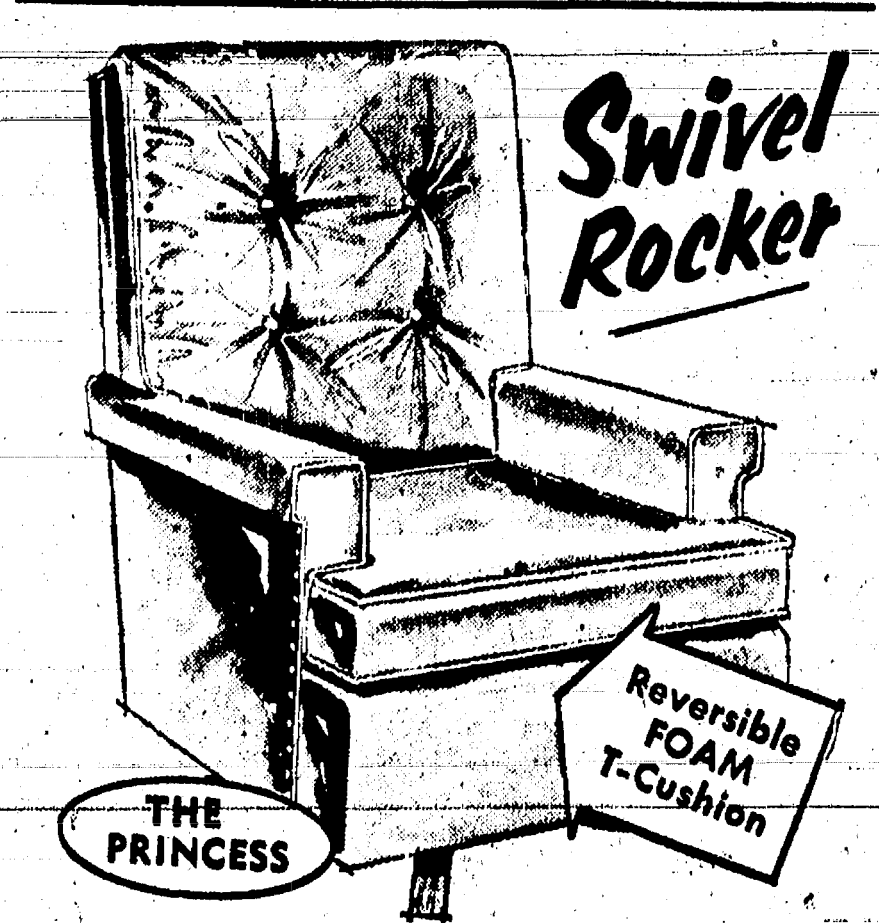
Rockers and Recliners

Gambles The Friendly Store



Executive Deluxe Recliner

A multi-purpose recliner. King size for king-size comfort. Masland vinyl with a leather grained look. Black - Olive - Brown.



Swivel Rocker

Reversible FOAM T-cushion

A handsomely tailored modern swivel rocker, covered in either 100% Scotchguard nylon or Madrid vinyl.

\$68.00 Reg. \$89.95

Always Better Buys at GAMBLES

MID-STATE FINANCE CORP.

\$25 to \$1,000 For Any Worthwhile Purpose

See or Call FRANK HILL at 475-8631

111 PARK STREET CHELSEA, MICH.

SPAGHETTI DINNER SUNDAY, JAN. 26

Serving from 12 Noon to 6 p.m. at Chelsea High School Cafeteria

Sponsored By Chelsea K. of C. Council

AGRICULTURE In Action

by M. L. Wood

Refreshing Optimism

There is a truly great future in store for Michigan farmers—at least in the opinion of a majority of youthful farm couples attending a recent Young Farmer Conference on the campus of Michigan State University.

Perhaps this opinion unduly reflects the refreshing optimism of youth, but those attending appeared to know exactly what it takes to operate a modern farm these days.

They should, for represented among the 25 couples was a total of 10,000 acres of prime Michigan farmland. Largest acreage reported was a whopping 1,400 and the smallest was an intensively cultivated commercial vegetable farm of only 66 acres.

The average couple operated 450 acres and maintained a dairy herd. Most admitted to "owning at" their operations—meaning that they were involved in some form of partnership—either with their parents or with the local bank. When asked to list prime concerns by the Community Programs department of the Michigan Farm Bureau, organizers of the conference, the young farmers surprised many by placing equal emphasis on tangible and intangible services. For example, they were as concerned about the farm's public image as they were about a good supply of petroleum products, and placed about equal value on social concerns and "legislative help" as they did on a co-operative source of economic feed and fertilizer supplies.

This attitude hardly fits the mental picture many have of today's aggressive, single minded young man, more concerned with his pocketbook than with public attitude and policy. But most were hard-headed when they talked about their future, tempering enthusiasm with common sense.

One said, "The future of farming is very good for the person who has, or will get the necessary education. He will have to become big if he is to make a go of it." A young farm wife summed it up with, "The future of farming is bright, but it will require a hard-working, good-managing man to survive." Then, dimpling in the direction of her husband, she added, "Plus a lot of help from his wife."

Scouts Ready For Saturday's Klondike Race

Six to seven hundred scouts and leaders from Portage Trails Council are expected to gather at the Hudson Mills Metropark Saturday for the annual Klondike Derby. Jim Brynham of Chelsea, Derby chairman, expects more than 150 sleds to compete in this colorful winter event.

Scout troops may enter as many patrols as they wish. Each patrol builds its own Klondike sled, to pull over the two mile course, guided by map and compass. Stops at eight "cities" along the route will test first-aid, signalling, nature, pioneering and other scout skills. Patrol leaders are given sealed orders to insure that the scouts do not know what to expect.

Scouts will cook their lunch on the trail and will be treated to hot chocolate at the "saloon" when they complete the trail.



Executives and Professional people... are sometimes victims of million dollar lawsuits. Protect yourself with **Auto-Owners UMBRELLA POLICY**. **A. D. MAYER AGENCY, INC.** "Your Protection Is Our Business" 115 Park St., Chelsea Phone 479-5061

Auto-Owners INSURANCE Life - Casualty - Fire - Auto

THE SUPERMARKET THAT'S JUST A LITTLE BIT BETTER

Stop & Shop

14901 Old U.S.-12
Corner at M-52
Chelsea

"Triple R Farms" U.S.D.A. Choice

ROUND STEAK 99¢ lb.

THE KNOW HOW OF INTELLIGENT MEAT BUYING IS REALLY THE 'KNOW WHERE'

Our customers have learned to depend on the outstanding quality of Stop & Shop meats—unfailing satisfaction with every cut they purchase. The finest quality, together with the experienced expertise of our meat cutting experts, makes an unbeatable combination!

Prices Effective Wednesday, January 22 through Tuesday, January 28, 1969

"Triple R Farms" U.S.D.A. Choice

Sirloin Steak

\$1.09 lb.

"Triple R Farms" Lean, Delicious

Cube Steaks

\$1.09 lb.

"Triple R Farms" U.S.D.A. Choice

Rib Steaks

\$1.09 lb.

"Triple R Farms" U.S.D.A. Choice

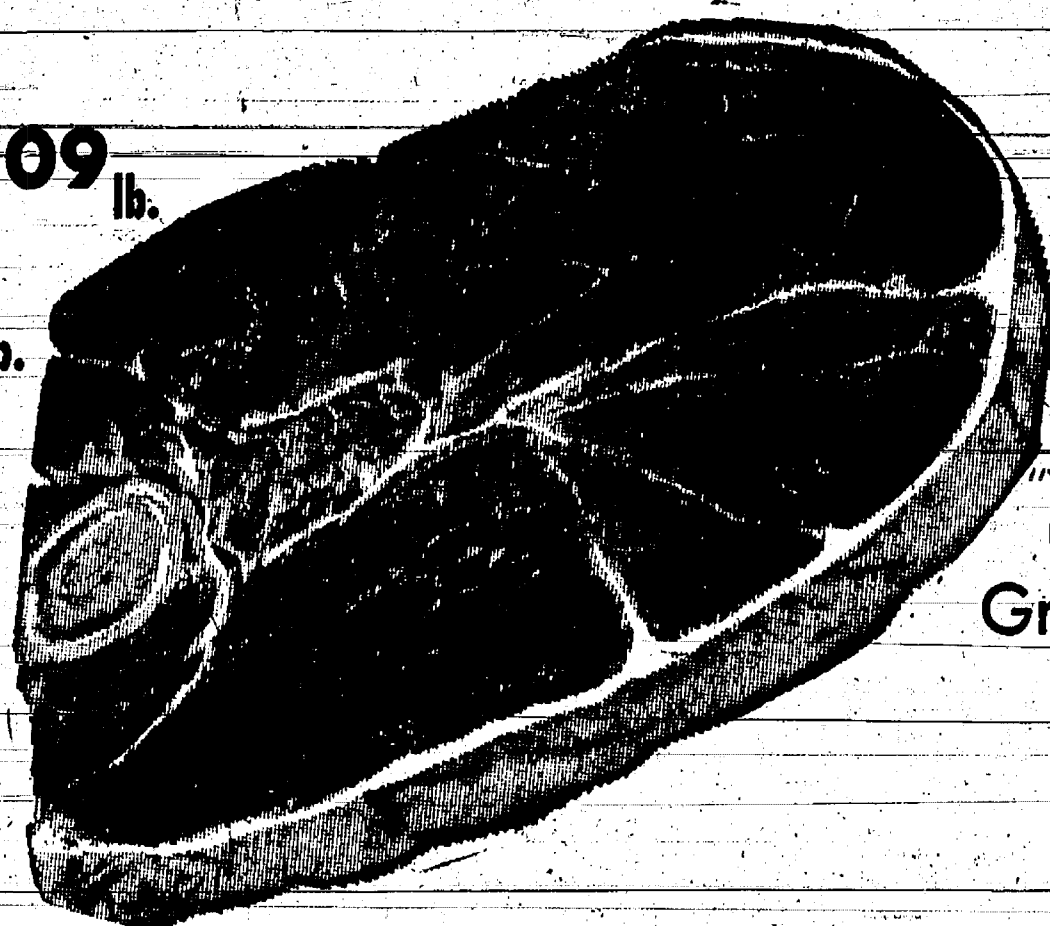
Chuck Steaks

69¢ lb.

Lean, Tender, Meaty

Pork Steaks

69¢ lb.



"Triple R Farms" U.S.D.A. Choice
Ground Round
STEAK

89¢ lb.

Stop & Shop's Fresh, Lean, All American

ALL-AMERICAN

HAMBURGER

59¢ lb.

"Triple R Farms" Mich. Grade 1

SLICED

BOLOGNA

49¢ lb.

"Triple R Farms" U.S.D.A. Choice

RUMP or SIRLOIN TIP

ROAST

\$1.09 lb.

"Triple R Farms" Mich. Grade 1

SKINLESS

WIENERS

49¢ lb.

Tender, Sliced

BEEF

LIVER

39¢ lb.

Farm Fresh Produce

Fresh, Green

Broccoli

Lb. 39¢

Fresh, Vitamin Rich

Spinach

10-Oz. Cello Pkg. 29¢

D'Anjou

Pears

Lb. 29¢

Florida Temple

Oranges

Doz. 59¢

Carnival Fresh, Delicious

Ice Cream

Half Gallon

49¢

Crispy Flake

Potato Chips

14-Oz. Bag

49¢

Maxwell House

Coffee

1-Lb. Can

59¢

The Washday Miracle

XK Tide

3-Lb., 1-Oz. Box

64¢

Land O' Lakes Lightly Salted

Butter

1/4-Lb. Prints

69¢ lb.

Contadina Solid Pack, Peeled

Tomatoes

4 1-Lb., 12-Oz. Cans

\$1.00

Vlasic

Sweet Snax Pickles

1-Pint, 10-Oz. Jar

49¢

Stokely's Tomato

Catsup

14-Oz. Bottle

19¢

One-Way Bottles

Coca Cola

8 Pack 10-Oz. Bottles

89¢

Cypress Garden

Grapefruit Juice

3 1-Qt., 14-Oz. Cans

89¢

Keebler

Club Crackers

1-Lb. Box

39¢

Sunshine

Hydrox Cookies

1-Lb. Cello

47¢

Nabisco

Ritz Crackers

1-Lb. Box

43¢

Shur-Good

Coconut Bar Cookies

14-Oz. Pkg.

39¢

Gold Medal

Enriched Flour

5-Lb. Bag

49¢

Great American

Soups

8 Delicious Soups

2 14 3/4-Oz. Cans

39¢

Banquet

Whole Chicken

3 1/4-Lb. Can

99¢

Franco-American

Spaghetti

4 1-Lb., 10 1/2-Oz. Cans

99¢

Van Camp's

Pork & Beans

7-Pound Can

89¢

McDonald's Fruit Flavor

Yogurt

Low Cal

8-Oz. Ctn.

25¢

McDonald's Fresh, Delicious

Chocolate Milk

Qt. Ctn.

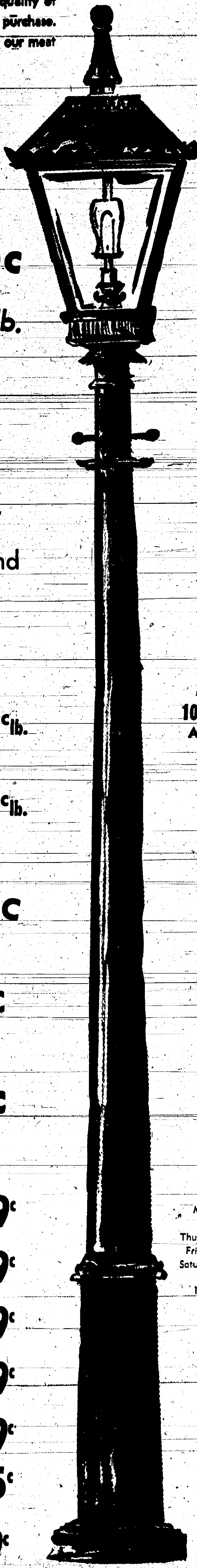
19¢

WE RESERVE THE RIGHT TO LIMIT QUANTITIES

OPEN SUNDAY 10 a.m. - 6 p.m. All Sale Prices Effective Sundays

Sorry, No Sales To Dealers

STORE HOURS: Mon., Tues., Wed., 9 a.m.-6 p.m. Thursday, 9 a.m.-9 p.m. Friday, 9 a.m.-9 p.m. Saturday, 8 a.m.-9 p.m. Sunday, 10 a.m. to 6 p.m.



BOWLING NEWS

Tri-City Mixed League

Standings as of Jan. 17

	W	L
Chelsea Cleaners	48 1/2	31 1/2
Wolverine Early Birds	47	32
Cavanaugh Lake	46	34
3-D	43 1/2	36 1/2
Odd Balls	43	37
Flintstones	40	40
Sprague Bulk & Olds	37	43
Clear Lake	36 1/2	43 1/2
Wolverine No. 1	32 1/2	47 1/2
Don's Standard	28 1/2	51 1/2
For Mobil		
Women's high series: A. Hocking, 534; B. Parish, 518; N. Miller, 496; G. Detling, 483; M. Ashmore, 456; L. Leisinger, 451.		
Women's high games: B. Parish, 166-161; D. Watkins, 155-154; N. Miller, 177-168; A. Hocking, 168-208-158; G. Detling, 182-157; L. Leisinger, 168-100; D. Worden, 178; D. Fouty, 150; L. Jarvis, 152; L. Cole, 175.		
Men's high series: C. Parish, 519; L. Hocking, 553; W. Griffith, 562; A. Fouty, 500; R. Worden, 516; A. Peterson, 504; A. Sannes, 576.		
Men's high games: B. Cruise, 213-204; L. Hocking, 202; C. Detling, 200; R. Fike, 215; W. Griffith, 200-201; A. Sannes, 211.		

Charlie Brown and Snoopy's Friends

Standings as of Jan. 18

	W	L
Strikers	37	20
Road Runners	31	26
Uggers	31	26
Ringers	30	27
Hoppers	29	28
Super B's	28	29
Snoopy's Stars	28	29
Liops	28	29
S.M.K.D.J.'s	27	30
Charlie Brown All Stars	27	30
Born Losers	24	33
Red Barons	22	35
Games of 100 or over: Jon Lewis, 141; John Elliott, 139-100; Mark Burnett, 133; Steve Lyster, 131; Linda Hafner, 130-107; Mark Pennington, 128; Don Messner, 127; Don Eisele, 119; Doug Craft, 118-118; Jamie Boyer, 118; Carol Smyth, 114; Vicki Burnett, 111; David Klink, 105; Steve Bowen, 104; Kenny Harris, 102; John Poon, 102; Bill Shoemaker, 102; Dale Poertner, 100; Doug Lorenz, 100; Tammy Greenleaf, 100; Brian McGibney, 100.		

Junior Swingers

Standings as of Jan. 18

	W	L
Ph Busters	48	16
Steve Suzie's Swingers	45	19
Getter Guys	40	24
Blue & Gold	31	33
B. & B.	19	45
Ch. Bombs	3	61
Games of 130 or over: Laurie Sannes, 134; Jackie Murphy, 152; Betty McNutt, 147-149-162; Mike Murphy, 138-138; Dan Adams, 132-143; Brian Schittenhelm, 130-148-183.		
Series over 400: Betty McNutt, 438; Brian Schittenhelm, 467.		

Chelsea Industrial League

Standings as of Jan. 22

	W	L
Dana Corp.	32	20
Fearsome Four Plus 1	29	23
Chelsea Lanes No. 2	28	24
Chelsea Lanes No. 1	27	25
Central Fibre	23	29
Cook's Store	16	36
High series over 500: E. Greenleaf, 565; T. Schultz, 567; M. Smith, 501; O. P. Cavender, 554; J. Fortner, 531; L. Ludtke, 527; P. Kelly, 520; W. Whitaker, 514.		
Games over 200: J. Fortner, 224; E. Greenleaf, 222; T. Schultz, 219; O. P. Cavender, 212; W. Whitaker, 201; P. Kelly, 200.		

Rolling Pin League

Standings as of Jan. 21

	W	L
Mopper Uppers	45	23
Spooners	43	25
Grinders	41	27
Coffee Cups	39	29
Kookie Kutters	39	29
Pots	37 1/2	30 1/2
Mixers	35	33
Egg Beaters	34	34
Jolly Mops	29	39
Kitchen Kapers	24	44
Dish Rags	21 1/2	48 1/2
Brooms	20	48
140 games and over: J. Rabbitt, 179; G. Weiner, 163; G. Klink, 143; K. Brettschneider, 147; E. Harmon, 148-148-149; J. Lewis, 167-168-147; E. Gilbreath, 164-142; B. McKinley, 164; A. Eisele, 152-155; W. Landwehr, 145; D. Butler, 194-169-142; J. Rowe, 150-148; L. Keezer, 158-169-179; E. Reynolds, 186; E. Williams, 170-146; M. Cook, 146-181; D. Mayfield, 155; J. Edick, 141-163; S. Parker, 150-157; K. Del Prete, 145-153-105; J. Priest, 155-156-174; J. Freeman, 170.		
400 series and over: J. Rabbitt, 585; E. Harmon, 445; J. Lewis, 478; G. Klink, 407; E. Gilbreath, 437; B. McKinley, 427; A. Eisele, 430; D. Butler, 495; J. Rowe, 419; L. Keezer, 508; E. Reynolds, 432; M. Cook, 498; E. Williams, 438; J. Edick, 406; S. Parker, 448; K. Del Prete, 463; J. Priest, 525; J. Freeman, 427.		
Splits converted: P. Pierce, 3-10; S. Parker, 5-7; A. Pichea, 3-10; B. Vetter, 4-5-7; E. Williams, 4-5-7; D. Anderson, 2-7.		

Guys and Gals Mixed League

Standings as of Jan. 16

	W	L
Wonder Bar	48	28
Chelsea Lanes	45	33
Team No. 9	42	34
Pleasant Lake Resort	40 1/2	35 1/2
Ken's Standard Service	40 1/2	35 1/2
Murphy's Barber Shop	37 1/2	39 1/2
2 & 2	36 1/2	39 1/2
Strikers	36	40
Recreation Tavern	33 1/2	42 1/2
Challengers	32	44
Pub No. 2	28 1/2	47 1/2
Team high game: Challengers, 698.		
Team high series: Challengers, 2,063.		
Women's high game: B. Fritz, 199.		
Women's high series: B. Fritz, 528.		
Women's 150 or over games: S. Cook, 152; E. Koefger, 161; P. Pardon, 152-166; C. Timmerman, 155-167; D. Sannes, 157; N. Collins, 155-178-178; P. Elliott, 155-157; J. Hoag, 157; B. Fritz, 191-199; P. Huston, 154-156.		
Women's 425 or over series: E. Koefger, 459; P. Pardon, 468; C. Timmerman, 460; D. Sannes, 444; N. Collins, 504; P. Elliott, 456; J. Buku, 428; B. Fritz, 528; P. Huston, 456.		
Men's high games: H. Kunzelman, 591.		
Men's high series: H. Kunzelman, 213.		
Men's 175 or over games: D. Fritz, 184; R. Huston, 181; H. Kunzelman, 199-179-213; J. Bergman, 185; R. Kotar, 182-202; E. Buku, 178; J. Collins, 185-178; J. Elliott, 203-180; B. Kneir, 197; E. Greenleaf, 180; A. Sannes, 176-183; A. Rosentreter, 177-192; K. Pardon, 195-195; R. Kiewasser, 179; E. Green, 190; D. Green, 203-202.		
Men's 500 or over series: A. Rosentreter, 555; K. Pardon, 560; A. Sannes, 524; J. Collins, 516; J. Elliott, 537; R. Kotar, 550; E. Buku, 508; H. Kunzelman, 591; D. Green, 505.		

Chelsea Lanes Mixed

Standings as of Jan. 17

	W	L
Triangle Trailer Sales	47	29
Doody & Turner	46	30
Chelsea Lanes	43 1/2	32 1/2
Poor Fritz	43	33
H. & H.	41	35
Lyndon Color Lab	39	37
Johnson's Tool Shop	38	38
Wolverine No. 2	38	38
Rabbit & Althouse	32	44
Wolverine No. 3	30 1/2	45 1/2
Gephart & Barkley	30	46
Wolverine No. 1	28	48
Men's 175 and over: M. Poertner, 227-184; B. Fitzsimmons, 226; F. Barkley, 220; M. Rabitt, 210-109; E. Greenleaf, 210-179; O. Johnson, 208-191; D. Lyndon, 205; R. Pike, 204-202; J. Harmon, 194; G. Burnett, 180-193; F. Powell, 179-180-191; R. Kiel, 188-178; W. Steinaway, 180-178; R. Hutzler, 170; R. Morgan, 178; D. Sindlinger, 178; L. Gephart, 178.		
Men's 475 and over: M. Poertner, 565; M. Rabitt, 579; O. Johnson, 563; R. Fike, 561; F. Powell, 569; E. Greenleaf, 554; F. Barkley, 538; D. Lyndon, 518; R. Kiel, 510; B. Fitzsimmons, 502; G. Burnett, 502; W. Steinaway, 498; R. Morgan, 498; J. Harmon, 489; B. Robertson, 488; D. Sindlinger, 480.		
Women's 150 and over: A. Turner, 182-233; L. Doody, 170-228-161; M. Robertson, 195; P. Fitzsimmons, 188-180; V. Harvey, 150-187-162; P. Poertner, 184; J. Hutzler, 178-180; N. Althouse, 177; E. Harmon, 164-174; A. Sindlinger, 178; J. Rabitt, 171; K. Lyndon, 154-161-168; M. Burnett, 165; R. Johnson, 164-161; L. Alexander, 161-166; J. Burnett, 156; B. Fike, 154; F. Gephart, 152.		
Women's 450 and over: L. Doody, 554; A. Turner, 541; P. Fitzsimmons, 520; V. Harvey, 499; J. Hutzler, 489; K. Lyndon, 488; E. Harmon, 475; L. Alexander, 465; P. Poertner, 463; N. Althouse, 461; J. Rabitt, 456; R. Johnson, 466.		

Why is it that idle women are usually dissatisfied?

Junior House League

Standings as of Jan. 16

	W	L
Wolverine	37	46
Pub Bar	30	53
Mid-State Finance	29	54
Gambles	29	54
Wonder-Bar	29	54
3-D Sales & Service	26	57
Jiffy Mixes	25	58
Boyer Automotive	24	59
Parish Cleaners	22	61
Dirty Dozens	19	64
Palmer T-Birds	18	65
N. Am. Rock Corp.	18	65
Over 200 series: L. Salyer, 287-219; B. Morton, 239; K. Bidne, 236-213; G. Stephens, 223; R. V. Worden, 222; A. Fouty, 214; R. Devine, 211; J. Harook, 213; S. Johnson, 211; P. Boham, 205; J. Verway, 202; F. Barkley, 202; D. Scott, 200.		
Over 600 series: L. Salyer, 686; K. Bidne, 642.		
Over 500 series: S. Hopkins, 568; A. Fouty, 573; J. Verway, 564; R. H. Ringe, 561; B. Morton, 560; G. Stephens, 558; L. Hocking, 553; R. Devine, 545; F. Barkley, 544; A. Fletcher, 543; R. V. Worden, 541; D. Scott, 528; K. Norris, 528; J. Harook, 519; P. Boham, 508; T. Wisniewski, 514; W. McGlenon, 503; S. Johnson, 505; B. Fletcher, 504; F. Dickinson, 503; B. Robbins, 502; B. Yocum, 502; J. Bergman, 501.		

Sunday Swingers Mixed League

Standings as of Jan. 19

	W	L
Crafts	22	14
Odd Couples	20	14
Outlaws	21	15
Limelights	19 1/2	18 1/2
Fun Chums	19	17
Red Barons	18	18
Kutty Sark-4	17	19
Manchester Four	15	21
Mimuts	15	21
Swappers	11 1/2	24 1/2
Women's games over 150: E. Haydock, 152; B. Craft, 154; H. Craft, 166-164-185; S. Bowen, 178; N. Pichlik, 164; N. Beal, 170; S. Timmerman, 179; C. Reinhart, 183.		
Women's series over 450: H. Craft, 515; S. Timmerman, 469.		
Men's games over 175: C. Koehn, 176; D. Coppernoll, 177; B. Craft, 179; H. Craft, 181; H. Morton, 187-193; D. Rowe, 225-191; T. Bowen, 183; J. Krichbaum, 202-201; J. Heller, 184; J. Beal, 191.		
Men's series over 475: H. Morton, 520; D. Rowe, 535; T. Bowen, 513; J. Krichbaum, 575; J. Beal, 484.		

Chelsea Lanes Mixed

Standings as of Jan. 17

	W	L
Triangle Trailer Sales	47	29
Doody & Turner	46	30
Chelsea Lanes	43 1/2	32 1/2
Poor Fritz	43	33
H. & H.	41	35
Lyndon Color Lab	39	37
Johnson's Tool Shop	38	38
Wolverine No. 2	38	38
Rabbit & Althouse	32	44
Wolverine No. 3	30 1/2	45 1/2
Gephart & Barkley	30	46
Wolverine No. 1	28	48
Men's 175 and over: M. Poertner, 227-184; B. Fitzsimmons, 226; F. Barkley, 220; M. Rabitt, 210-109; E. Greenleaf, 210-179; O. Johnson, 208-191; D. Lyndon, 205; R. Pike, 204-202; J. Harmon, 194; G. Burnett, 180-193; F. Powell, 179-180-191; R. Kiel, 188-178; W. Steinaway, 180-178; R. Hutzler, 170; R. Morgan, 178; D. Sindlinger, 178; L. Gephart, 178.		
Men's 475 and over: M. Poertner, 565; M. Rabitt, 579; O. Johnson, 563; R. Fike, 561; F. Powell, 569; E. Greenleaf, 554; F. Barkley, 538; D. Lyndon, 518; R. Kiel, 510; B. Fitzsimmons, 502; G. Burnett, 502; W. Steinaway, 498; R. Morgan, 498; J. Harmon, 489; B. Robertson, 488; D. Sindlinger, 480.		
Women's 150 and over: A. Turner, 182-233; L. Doody, 170-228-161; M. Robertson, 195; P. Fitzsimmons, 188-180; V. Harvey, 150-187-162; P. Poertner, 184; J. Hutzler, 178-180; N. Althouse, 177; E. Harmon, 164-174; A. Sindlinger, 178; J. Rabitt, 171; K. Lyndon, 154-161-168; M. Burnett, 165; R. Johnson, 164-161; L. Alexander, 161-166; J. Burnett, 156; B. Fike, 154; F. Gephart, 152.		
Women's 450 and over: L. Doody, 554; A. Turner, 541; P. Fitzsimmons, 520; V. Harvey, 499; J. Hutzler, 489; K. Lyndon, 488; E. Harmon, 475; L. Alexander, 465; P. Poertner, 463; N. Althouse, 461; J. Rabitt, 456; R. Johnson, 466.		

Progress in pediatric surgery, or "minisurgery," is correcting birth defects in infants which were untreatable 10 years ago, according to the March of Dimes.



BECKER MEMORIALS
6033 Jackson Road
ANN ARBOR, MICHIGAN

SPORTS CORNER



Old Timers League

Standings as of Jan. 17

	W	L
Great Lakes	54 1/2	25 1/2
City Bus	48	32
Washburn Lanes	47 1/2	33 1/2
Chelsea Lanes	45	35
Stain & Goetz	40	40
Colonial	39 1/2	40 1/2
Hotel Services	39	41
Mathy Corp.	38	42
Nelson Reptors	31 1/2	48 1/2
Hartman Ink	28	51
Ypsi-Arbor	28	54
Team high game and series: Bob & Otto, 828-845.		
Ind. high game and series: Jonas Otto, 201-236-638.		
Other 200 games and 500 series and over: Bruce Elliott, 531; William Fench, 213-507; Gene Rohde, 518; Roy Carpenter, 200-518; Floyd Menery, 516; George Lawrence, 212-578; Emil Yak, 535; Paul Grabowski, 506; William Fishlock, 514.		

Chelsea Suburban League

Standings as of Jan. 15

	W	L
Krege Arborland	47	25
Western & Southern	30	26
Patty Ann	43	27
Dana Corp.	45	29
G. A. Sales	40	32
Dancer's Dept. Store	40	32
Foor Mobil	37	35
Chelsea Lanes	33	39
Waterloo Garage	28	44
State Farm	27	41
Pittfield Plastics	26	46
Artex Roll-Ons	20	52
425 series and over: R. Musbach, 477; B. Hafley, 481; S. Bowen, 434; R. West, 469; B. Fike, 433; R. McGibney, 504; G. Wilkerson, 463; L. Jarvis, 451; K. Snyder, 477; G. Klink, 435; J. Buku, 470; G. DeSmith, 425; B. Fritz, 547; A. Bohne, 441; A. Hocking, 487; R. Harook, 425; L. Keezer, 487.		

487; N. Packard, 481; N. Collins, 496; E. Williams, 476; M. L. Westcott, 461; V. Hopkins, 458.
150 games and over: M. Buku, 168; K. Snyder, 160-150-167; J. Buku, 171-171; P. Huston, 150; B. Fritz, 195-165-187; R. Musbach, 168-193; S. Bowen, 161; G. Wilkerson, 160-158; E. Yocum, 160; A. Hocking, 150; R. Harook, 165; L. Keezer, 181; N. Packard, 169-198; N. Collins, 167-189; J. Riehmiller, 170; E. Williams, 151-156-169; V. Finch, 151; C. Peterson, 156; M. L. Westcott, 166-158; D. Haas, 167; V. Hopkins, 165; B. Hafley, 1

+ Services in Our Churches +

CONGREGATIONAL CHURCH
(United Church of Christ)
The Rev. Daniel Kellin, Pastor
Thursday, Jan. 23—
8:30 p.m.—Junior Choir.
7:30 p.m.—Senior Choir.
Friday, Jan. 24—
1:00 p.m.—United Church Women.
Saturday, Jan. 25—
9:00-11:00 a.m.—Confirmation Class.
Sunday, Jan. 26—
10:00 a.m.—Morning worship and Sunday school.
8:00 p.m.—Spaulding for Children Annual Meeting.
Wednesday, Jan. 29—
6:30 a.m.—Men's breakfast, discussion of sermon.

IMMANUEL BIBLE CHURCH
The Rev. Frank C. Frinkle, Pastor
145 E. Summit St.
Sunday, Jan. 26—
9:45 a.m.—Sunday school, nursery provided.
11:00 a.m.—Morning worship, nursery provided.
7:30 p.m.—Evening service.
Every Wednesday—
7:30 p.m.—Family Hour and Junior choir.

CHELSEA BAPTIST CHURCH
The Rev. Elmer S. Steenson, Pastor
Sunday, Jan. 26—
10:00 a.m.—Sunday school.
11:00 a.m.—Worship service.
Nursery care available during Sunday school and worship service.
6:00 p.m.—Junior and Senior Baptist Youth Fellowship.
7:00 p.m.—Evening worship.
Wednesday, Jan. 29—
7:30 p.m.—Bible study and prayer meeting.

NORTH SHARON COMMUNITY BIBLE CHURCH
Sylvan and Washburn Rds.
The Rev. Paul Collins
Sunday, Jan. 26—
10:00 a.m.—Sunday school.
11:00 a.m.—Worship service.
6:30 p.m.—Young People's service.
7:00 p.m.—Evening service.
Every Wednesday—
7:30 p.m.—Prayer meeting.

ST. PAUL UNITED CHURCH OF CHRIST
The Rev. Warner Siebert, Pastor
Thursday, Jan. 23—
9:00 a.m.—Koinonia.
Saturday, Jan. 25—
9:00 a.m.—Confirmation.
11:00 a.m.—Youth Choir.
Sunday, Jan. 26—
9:15 a.m.—Church school.
10:30 a.m.—Worship.
6:30 p.m.—SYF Pot-luck.
8:00 p.m.—Spaulding for Children annual meeting at Congregational church.
Monday, Jan. 27—
7:30 p.m.—Church school teachers.

ST. JACOB EVANGELICAL LUTHERAN CHURCH
12501 Reithmiller Rd., Grass Lake
The Rev. Andrew Bloom, Pastor
Sunday, Jan. 26—
8:45 a.m.—Worship service.
9:45 a.m.—Sunday school.
10:45 a.m.—Worship service.

ST. JOHN'S EVANGELICAL AND REFORMED CHURCH
(United Church of Christ)
Francisco
The Rev. Robert Townley
Sunday, Jan. 26—
9:45 a.m.—Sunday school.
11:00 a.m.—Church services.

SALEM GROVE METHODIST CHURCH
The Rev. George Nevin, Pastor
Sunday, Jan. 26—
10:00 a.m.—Sunday school.
11:15 a.m.—Church service.

ST. MARY'S CATHOLIC CHURCH
The Rev. Fr. Francis Warkowick
Saturday, Jan. 25—
4:00-5:00 p.m.—Confessions.
7:30-8:30 p.m.—Confessions.
Sunday, Jan. 26—
Masses at 8:30 a.m., 8:00 a.m., 10:00 a.m. and 11:30 a.m.

NORTH LAKE METHODIST CHURCH
The Rev. George Nevin, Pastor
Sunday, Jan. 26—
9:30 a.m.—Worship service.
10:30 a.m.—Sunday school.

FIRST UNITED METHODIST CHURCH
The Rev. Robert Workes, Pastor
Friday, Jan. 24—
1:00 p.m.—United Church Women at Congregational church.
Sunday, Jan. 26—
9:00 a.m.—Church School (Third through senior high).
10:00 a.m.—Church school (Nursery through fifth).
10:00 a.m.—Worship service.
11:05 a.m.—Adult Study Class.
7:00 p.m.—Senior-MYF.
Monday, Jan. 27—
8:00 p.m.—Commission on Missions.
Wednesday, Jan. 29—
4:00-4:45 p.m.—Primary Choir.
4:45-5:30 p.m.—Junior Choir.
7:00 p.m.—Youth Choir.
8:00 p.m.—Senior Choir.

FIRST UNITED PRESBYTERIAN CHURCH
Unadilla
The Rev. T. H. Liang
Sunday, Jan. 26—
9:45 a.m.—Sunday school.
11:00 a.m.—Worship service.
Every Tuesday—
8:00 p.m.—Choir practice.

ST. BARNABAS EPISCOPAL CHURCH
20500 Old US-12
The Rev. William D. Luckau, Vicar
Sunday, Jan. 26—
11:00 a.m.—Morning Prayer.
1:00 a.m.—Church school and nursery.

FIRST CHURCH OF CHRIST, SCIENTIST
1883 Washtenaw Ave., Ann Arbor
Sunday, Jan. 26—
10:30 a.m.—Morning service.
Lesson-Sermon: "Truth."
10:30 a.m.—Sunday School.

FIRST ASSEMBLY OF GOD CHURCH
The Rev. Stephen J. Vaudrey, Pastor
Sunday, Jan. 26—
10:00 a.m.—Sunday school.
11:00 a.m.—Worship service.
7:00 p.m.—Evangelistic service.

ZION LUTHERAN CHURCH
Corner of Fletcher, Waters Rds. (Rogers Corners)
The Rev. John R. Morris, Pastor
Saturday, Jan. 25—
9:00-11:30 a.m.—Seventh grade youth instruction class.
Sunday, Jan. 26—
9:00 a.m.—Sunday school.
10:15 a.m.—Worship.
7:30 p.m.—Luther League.

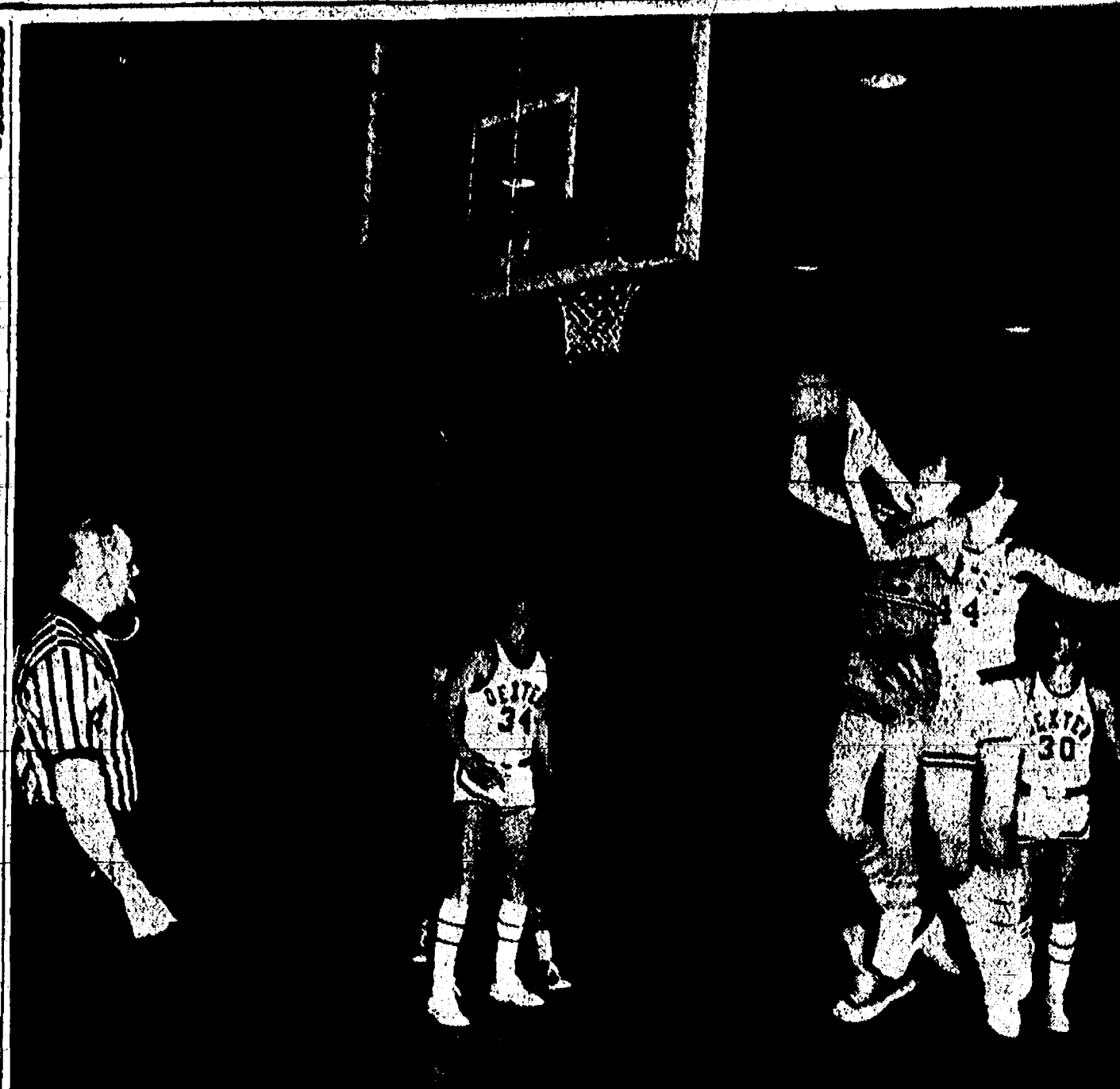
METHODIST HOME CHAPEL
The Rev. John Fall Administrator
The Rev. Wm. Johnson, Chaplain
Sunday, Jan. 26—
8:45 a.m.—Worship service.

WATERLOO VILLAGE CHURCH
(Evangelical United Brethren)
The Rev. Wilbur Silvernall, Pastor
Sunday, Jan. 26—
10:00 a.m.—Sunday school.
11:15 a.m.—Worship service.

ST. JOHN'S EVANGELICAL AND REFORMED CHURCH
(United Church of Christ)
Rogers Corners
The Rev. Robert Townley
Sunday, Jan. 26—
9:30 a.m.—Church service.
10:30 a.m.—Sunday school.

BETHEL EVANGELICAL AND REFORMED CHURCH
(United Church of Christ)
Freedom Township
The Rev. T. W. Menzel, Pastor
Sunday, Jan. 26—
10:00 a.m.—Worship.
11:00 a.m.—Sunday school.

ST. THOMAS EVANGELICAL LUTHERAN
Cor. Ellsworth and Haab Rds.
Freedom Township
The Rev. Daniel L. Mattson, Pastor
Saturday, Jan. 25—
8:00 a.m.—Confirmation class for 6th and 7th graders.
Sunday, Jan. 26—
10:00 a.m.—Church service.
11:00 a.m.—Sunday school.



SURROUNDED BY DREADNAUGHTS, Bull-dog Len Kozma attempts to narrow the gap between scores during the Friday night game. Chelsea was on the short end of the scoreboard all night, although they did come to within four points of their hustling hosts at one point during the game.

CHELSEA VILLAGE COUNCIL PROCEEDINGS

January 7, 1969
Regular Session
This meeting was called to order by Pres. Baldwin at 8:00 p.m. Trustees present: Fulk, Gorton, Heydlauff, Miller, Pennington and Weber. The Minutes of the Regular Session of December 17, 1968 were read and approved.
A discussion was held with Mr. Dick Lennox of Finkbeiner, Pettis and Strout, regarding the Flanders Street ejector station. A malfunction of the station during the holidays caused flooding of several basements in the Flanders and Book Street area. Finkbeiner, Pettis and Strout was authorized to investigate the possible need for a lift station to replace the present ejector station. Trustee Weber was authorized to contact Village Engineer, Peter Kunzy, regarding storm sewer survey of the Flanders, Book and Wendly Streets area.
Pres. Baldwin was authorized to contact the Mich. Bell Telephone Company regarding a cost analysis for the installation of a warning alert system to be installed from the Flanders ejector station to the village dispatchers office.
Motion by Miller, supported by Gorton, that the firm of Teerman, Johnson and Hoffman be employed to audit the books of the Village and the Chelsea Electric and Water Dept. Roll Call: Yeas all. Motion carried.

A discussion was held with Mr. Charles Ritter regarding the burning of refuse and garbage at the South Elementary School. Pres. Baldwin advised Mr. Ritter that the Chelsea School Board would be contacted.
Mr. William Rademacher spoke to the council regarding the Old Jr. High School property. He expressed his concern that the area seemed to be a very logical site for the village.

GREGORY BAPTIST CHURCH
The Rev. Grant Lapham, Pastor
Sunday, Jan. 26—
10:00 a.m.—Worship service.
11:15 a.m.—Church school.
6:30 p.m.—Baptist Youth Fellowship.
7:30 p.m.—Evening worship service.

Motion by Fulk, supported by Pennington, to request the Chelsea School Board to retain the bid of \$15,000.00 as submitted by the Village, to allow for further study. Motion failed from lack of support.
Motion by Fulk, supported by Pennington, to request the Chelsea School Board to release the Village bid of \$15,000.00 for the Old Jr. High School property. Yeas: Miller, Gorton, Weber, Pennington and Fulk. Nays: Heydlauff. Motion carried.

Trustee Heydlauff submitted a report and comparison of crime in the Village for the years 1967 and 1968. A council decision was made to publish the monthly police reports and the yearly analysis in The Chelsea Standard.
Motion by Weber, supported by Heydlauff, to transfer \$247.45 from the General Fund to the Public Works Equipment Fund. Roll call: Yeas all. Motion carried.

Motion by Gorton, supported by Fulk, to transfer from the Chelsea Elec. and Water Dept. to the General Fund \$10,000.00. Roll call: Yeas all. Motion carried.
Motion by Pennington, supported by Gorton to authorize and direct the clerk to issue checks in payment of bills as submitted: Roll call: Yeas all. Motion carried. General Fund: \$6,256.11; Parking Meter Fund: \$5.00; Public Works Equipment Fund: \$3,444.20.

Motion by Pennington, supported by Fulk, to adjourn the meeting.

Court Proceedings

Marilyn Campbell of Manchester stood mute at examination Jan. 20 before Judge Conlin on charges of murdering her husband James C. Campbell, Jan. 17. She was released on \$15,000 cash bond upon advice from state police. Examination has been postponed to Jan. 30 at the request of her lawyer.

Robert S. Koste pleaded guilty to minor in possession of intoxicating beverages and paid fine and costs of \$33.

An attorney was ordered appointed for Gerald Fuller Jan. 20 for charges of escaping prison March 27, 1967. Hearing was set for 9 a.m., Jan. 23.

Robert J. Edwards, Jr. was released Jan. 10 on \$100 bond after pleading not guilty to charges of accessing and soliciting.

Raymond D. Taulbee pleaded guilty to charges of drunk and disorderly and paid \$45 fine and costs.

The March of Dimes Professional Education Program makes new knowledge about birth defects available to medical professionals in all disciplines.

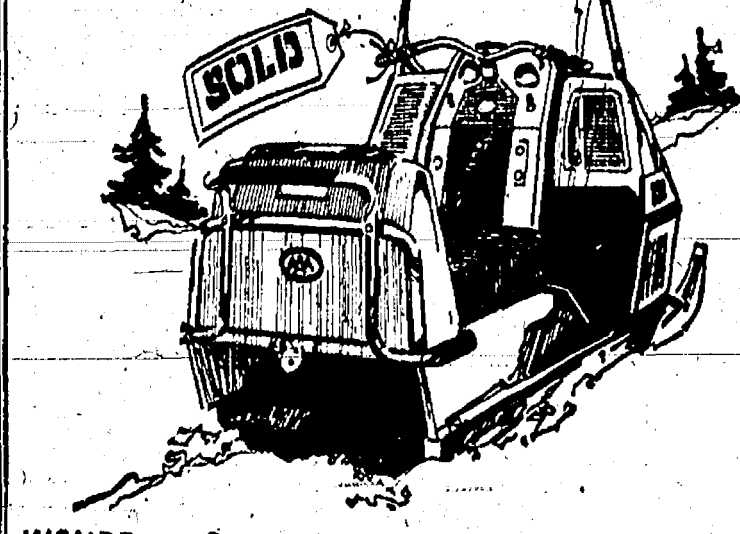
Roll call: Yeas all. Motion carried.

Meeting adjourned.

Approved: Jan. 21, 1969.
Donald E. Baldwin, President.
George Winans, Clerk.

ELECTROLUX VACUUM CLEANERS
SALES and SERVICE
JAMES COX
Ph. 428-2931 or 428-8221
Manchester

SNOWMOBILE INSURANCE AND FINANCING



INSURE your Snowmobile with the famous features of the Auto Club's Exchange car insurance. These money-saving protections and services are available right now:
* Money Back * Fellow Member Collision Protection * Fault-Free Collision Protection * NeighborCare * Fast, Satisfying Claims Service
FINANCE your new Snowmobile with AAA MemberLoan, the low-cost financing plan available through an arrangement with several leading Michigan banks. MemberLoan helps AAA members save money on cars, boats and recreational vehicles.

NOW, SNOWMOBILES LEAD THE WAY WITH

RAY JOHNSTON
1200 S. Main St., Ann Arbor Phone 665-7701
Detroit Automobile Inter-Insurance Exchange Automobile Club of Michigan

Cub Scouts

PACK 455—
Pack 455 met for their monthly pack meeting at Lima Community Hall Jan. 20. The Webelos conducted the flag ceremony. Webelos awards included Mike Hastings, Webelos denner; John Simpson, Webelos assistant denner; Don Aldrich, Cub denner; and Mike Rowe, assistant denner. Cub Scout Achievement awards were given to Greg Ringe, Jeff

Powell, Andy Pitten. Plans were discussed for the blue and gold dinner Feb. 22 at Lima Community Hall. The Webelos gave a demonstration of space ships and models they had made.
Scott Powers, reporter.
Warming up the auto in the driveway before driving to work is a good idea—if exhaust fumes from the auto does not harm nearby evergreens and deciduous

NOTICE

To All Our Customers
EFFECTIVE JANUARY 20, 1969

To extend your service and for installation, customers may call 426-8476 or Brighton 229-4543 collect.

BERG HEATING
FRANK BERG

—NOTICE—

Sylvan Township Taxpayers

Sylvan Township Treasurer will be at 103 N. Main St., Chelsea, to collect Sylvan Township Taxes Monday through Friday, 8 a.m. to 5 p.m., until Feb. 28, 1969

CHECKS WILL BE ACCEPTED BY MAIL

All Dog Licenses must be paid to Sylvan Township Treasurer on or before March 1, 1969, to avoid penalty.

MALE AND UNSEXED, \$3.00 - FEMALE, \$5.00

Rabies Vaccination papers must be presented in order to obtain license.

FRED W. PEARSALL
SYLVAN TOWNSHIP TREASURER

Notice of A Public Hearing

On An Amendment of the Zoning Ordinance for Lima Township

Notice is hereby given that a public hearing will be held by the Lima Township Zoning Board at 8:30 o'clock, p.m., on February 19, 1969, at the Lima Township Hall, Jackson Road, Lima Township, Michigan, to hear objections, if any, to the petition of Edward L. Green, Emily R. Green and Gail L. Green, for a change in the zoning classification of a parcel of land, herein-after described, from A-1, Agricultural to MHP-1, Mobile Home Park Zone:

Commencing at an iron pipe monument at the northwest corner of Section No. 24, T2S, R4E, Lima Twp., Washtenaw Co., Michigan and running thence S 4°-13'-30" W 1520.47 feet to the chord of a circular curve concave to the N whose radius is 12277.70 feet and whose arc is the center line of the right of way of Highway U.S. 12; thence S 66°-10' E 455.17 feet along said chord to the point of tangency of said curve; thence S 64°-30' E along the center line of said highway 634.01 feet to the beginning of a circular curve to the left whose radius is 6875.55 feet; thence southeasterly along the arc of said curve subtended by a chord which bears south 65°-21' E 303.51 feet for a place of beginning; thence N 4°-30' E along a property line fence 1307.53 feet to an iron pipe monument; thence S 83°-39'-30" E along a property line fence 2018.74 feet to an iron pipe monument in the westerly line of a 60 foot right of way; thence S 8°-32' E along the westerly line of said right of way 587.30 feet to the beginning of a circular curve to the right whose radius is 54.17 feet; thence southwesterly along the arc of the above curve subtended by a chord which bears south 40°-38'-30" W 80.82 feet to the point of tangency of said curve; thence S 89°-48'-30" W 877.51 feet to an iron pipe monument; thence S 67°-14'-30" W 38.05 feet to an iron pipe monument; thence S 18°-45' W 799.30 feet to an iron pipe monument; thence S 74°-20' W 40 feet to an iron pipe monument; thence south 18°-45' W 169.4 feet to the center line of said Highway; thence N 77°-48' W along the center line of said Highway 161.40 feet to the beginning of a circular curve to the right whose radius is 6875.55 feet; thence northwesterly along the arc of said curve subtended by a chord which bears N 72°-25' W 1290.70 feet to the place of beginning, and being part of the north half of said Section, excepting that part of a highway easement release as recorded in Liber 341 of Deeds, page 59, in the Washtenaw County Register of Deeds Office which lies between the east and west boundaries of the above described parcel; also excepting that portion of land, if any, lying N of the above highway easement release, and described in a warranty deed as recorded in Liber 143, page 251, in the Washtenaw County Register of Deeds Office, also subject to release of right of way given to the County Drain Commissioner and recorded in the office of the Register of Deeds for said County and State in Liber 536, of Records, on page 813. (This property is located on the north side of Jackson Road.)

Any party having an interest in said township, or his duly appointed representative, shall be heard at such meeting as to any matters that should come before said Board.

DATED: JANUARY 14, 1969

LIMA TOWNSHIP ZONING BOARD
GEORGE P. FRISINGER, CHAIRMAN

Egg'em on
with Enriched
FEEDS

Extra proteins, vitamins and minerals in our Laying Mash or Pellets help your hens produce more eggs, bigger eggs, more profits.

Complete feeding rations for all your livestock, poultry.

FARMERS' SUPPLY CO.
PHONE GR 5-5511

Notice of Public Hearing

On An Amendment of the Zoning Ordinance for Lima Township

Notice is hereby given that a public hearing will be held by the Lima Township Zoning Board at 8:00 o'clock, p.m., on 19th day of February, 1969, at the Lima Township Hall, Jackson Road, Lima Township, Michigan, to hear objections, if any, to the proposed changes and amendments to the Lima Township Zoning Ordinance, the same being proposed by the Lima Township Planning Board at the request of the Lima Township Board and in accordance with Act 184 of the Public Acts of Michigan of 1943, as amended. The proposed changes and amendments are as follows:

1. That Article II, Section 2.42 be deleted.
2. That there be added a new Article, known as "Article XIX", MHP-1 District Mobile Home Parks. The purpose of this district is to provide for the development of Mobile Home Parks which are an asset to the community and to prevent the development of those which would be a community liability, to promote Mobile Home Parks with the character of residential neighborhoods, and to provide that Mobile Home Park Districts be served adequately by essential public facilities and service. The uses to be permitted in said district are Mobile Home Park or Trailer Coach Parks, accessory buildings and uses incidental to the above use, and such conditional uses as may be permitted in accordance with Article XII of this Ordinance.

The proposed Amendments are on file in the office of the Lima Township Clerk, Duane Lutick, of 12980 Old U.S. 12, Chelsea, Michigan, and may be inspected by any interested party.

Any party having an interest in said township, or his duly appointed representative, shall be heard at such meeting as to any matters that should come before said Board.

Dated: January 14, 1969

LIMA TOWNSHIP ZONING BOARD
GEORGE P. FRISINGER, CHAIRMAN

NOTICE

Lyndon Township Taxpayers

Lyndon Township Treasurer will be at Chelsea State Bank to collect Lyndon Township taxes all day Friday, Jan. 31 and Friday, Feb. 28, only, from 9 a.m. to 5 p.m., and on any other day, at my home, 11437 Boyce Road, R.F.D. 2, Grass Lake, Mich. Those who wish may send check or money order by mail. Receipt will be returned by mail.

All Dog Licenses must be paid to Lyndon Township Treasurer on or before March 1, 1969, to avoid penalty.

MALE AND UNSEXED, \$3.00 - FEMALE, \$5.00

Rabies Vaccination papers must be presented in order to obtain license.

MARY CLARK
LYNDON TOWNSHIP TREASURER

Club, Social Activities

BURBAN MOTHERS

Members of Suburban Child Study Club met at the home of Mrs. Donald Kinley. A panel discussed the growth pattern and behavior of the 11-year-old child. Hostesses for the evening were Louise Foreman and Mrs. Bury.

The next meeting will be Feb. 14 at Burghardt Funeral Home.

CHILD STUDY CLUB

The Jan. 14 meeting of the Child Study Club was held at the home of Mrs. Charles Cap. With three guests present, Marvin Taurianen, Mrs. Mills and Mrs. Jon Schaf. The business meeting was followed by the program for evening.

An informal panel consisting of Charles Lane, Bruce Galbraith, George Bergman presented the "counseling, motivation discipline." Refreshments were served by co-hostesses Mrs. Warren and Mrs. Thomas.

The next meeting will be Monday, Jan. 27 when the club will discuss "Fiddler on the Roof" at Auditorium in Ann Arbor.

MRION SIMON CIRCLE

Marion Simon Circle of the First Methodist church met Jan. 18 at the home of Mrs. William Schumuk. The program was given by George Miller. The program was given by Mrs. Schumuk. The program was given by Mrs. Schumuk.

FULLY WIVES

Fully Wives met Jan. 18 at the home of Mrs. George Prince. Thirteen members were present to hear the Rev. Warner speak about Spaulding children.

The next meeting will be Tuesday, Feb. 18, at Morkel's Store.

OTHER CHAPTER

Other Chapter of the Congregational church met Jan. 18 at the home of Mrs. Laurene White. Cora Lee Miller gave devotionals taken from the Daily Devotional Guide. Mrs. White, president, reminded the chapter that Wednesday breakfast at the church.

A discussion was held concerning the public school luncheon given each year at the church and the date of March 10.

There was a bandage rolling, members cut out squares for robes and others worked on dress hospital gown. Mrs. White served dessert and coffee.

The group to her house for the 20 meeting.

ST. BARNABAS CHURCH WOMEN

The Church Women of St. Barnabas Mission adopted a budget for the year at a regular meeting Jan. 10. A gift of \$500 was voted to the Bishop's Committee by the ECW for use toward regular church expenses. Plans were made for a public casserole luncheon Thursday, Feb. 18. Refreshments were served to the group by the hostess, Mrs. Nell O'Brien.

KINDER KLUB

Members of Kinder Klub met Jan. 14 at the home of Mrs. Donald Proctor. Phil Hume from Chelsea Lumber Co. demonstrated intriguing and application of one of the new floor coverings. Mrs. Dan Ewald served refreshments. Mrs. Fred Hoffman and Mrs. George Miller reported receiving letters from soldiers in Vietnam who received the Christmas boxes. Mrs. Hoffman read one of the letters to the group.

The next meeting will be Jan. 28 at the home of Mrs. George Miller when a film concerning cancer and smoking will be shown. Members are asked to bring a wrapped "white elephant" to this meeting.

MARION KLINE CIRCLE

Members of the Marion-Kline Circle of the United Methodist church met on Jan. 15 for a 12:30 p.m. dessert luncheon. Hostesses were Mrs. Harry Prudden, Mrs. Irv Weiss, and Mrs. Ramsey. Twelve members were present as Mrs. Lloyd-Merrill called the meeting to order by reading a New Year's wish and gave a prayer. Fannie Chambers, sunshine chairman, read a letter from Marion-Kline thanking the circle for the card and gift of money sent to her for Christmas. Mrs. Raymond Schaller said that used Christmas cards could be sent to Harold Humble, at Kohrakal School, Madras State, South India. Mrs. Schaller offered to pack the box of good used clothing for Church World Service and deliver it to Ann Arbor for shipping. Members were asked to remember Mrs. Clarence Lillie with cards to be sent to her daughters near Houghton.

Mrs. Merrill had the interesting program on human rights. The first chapter of Colossians, verse 22-23 were read. The circle will meet Feb. 19 for a 12:30 p.m. luncheon at the home of Mrs. Robert Harris.

REBEKAH LODGE

Chelsea Rebekah Lodge No. 130 met at the hall Thursday, Jan. 21. Business conducted included the installation of Mrs. Clifford Wolfe as president by the Lodge Deputy. Mrs. Richard Keeler, Mrs. Bertha Johnson, was reported to be in St. Joseph Mercy Hospital room 415, bed 140. Mrs. Elwood Keeler, Mrs. Russell, and Mrs. Packard attended the Joint Installation of Harmony Lodge, Dexter, and the Odd Fellows Lodge of Ann Arbor held at Dexter Monday evening. The District 10 Degree Staff acted as installing officers. A transfer was



NINETEEN SCOUTS acted as salesmen for the Jaycee Auxiliary-sponsored peanut sales last week-end. Scouts from Troops 425, 476 and 465 exchanged 1,250 bags of peanuts for approximately \$200 for the March of Dimes Friday and Saturday. The young salesmen are, left to right, front row, Bill Scott, Carner Slocum, Dannie Schaeffer, Tony

Hafner; second row, Tim Eder, Dave Proctor, Bob Taylor, Ed Dreiman; third row, Don Hollinger, Don Keller, Dennis Barker, Mike Juergens, Randy Romine; fourth row, Jeff Marshall, Rodney Branham, Jon Schenk, and Bill Harrison. Other salesmen not present for the photo include Jeff Reed and Steve Worden. Charles Hafner was a sales assistant.

The Hi-Light

Edited by Students of the Chelsea High School Journalism Club

Monday, Jan. 13, the Ann Arbor Recruiting Office sent two representatives to Chelsea High school to administer the Armed Forces Aptitude Test.

The purpose of the test was to see what field of the armed forces the student would best fit into. Fifty-five students participated in the testing.

Chelsea High school is holding a careers night, Monday, Jan. 27, at 7 p.m. in the high school auditorium.

The purpose of having a careers program is to give students the opportunity to obtain more insight about numerous occupational fields. Other schools participating in the program are, Manchester, Glass Lake, Dexter, Stockbridge, Fowlerville and Whitmore Lake. Mrs. Anita Marr who is manager of Michigan Employment Security Commission in Ann Arbor will be the guest speaker.

Some fields which will be represented by a specialist in that field are, Modeling, Skilled Trades, Health Careers, Office World, Law Enforcement, Food Services, and Civil Services.

At a previous meeting, Christ Duer was elected vice-president. Mary Clark, assistant secretary.

Wolverine Radio Club

Committees Named

The Michigan Wolverine Radio Club Wastenaw Chapter held its monthly meeting Sunday, Jan. 19 at Sylvan Town Hall. President William Lentz appointed the following committees: audit Delmar and Dorothy Bentley, Janette Baldwin; activity, Peter Adams; by-laws, Henry Patterson; reporter, Dorothy Stanley. Five new members were taken into the club at this meeting.

It was decided that monthly meetings will be held on the second Sunday of each month at 2 p.m.

ANCIENT ART

No one knows who first smelted metals, but archeologists have found pieces of man-made iron that are nearly 5,000 years old.

TIPS

for your

TOP

from



TODDY and FRAN

There's no time like snow time to while away an afternoon (morning or evening) at the beauty shop, pausing from the day's occupation to refresh with a permanent to perk you up for the mid-winter slump period. We've a host of delightful, experienced, helpful operators who sincerely want to please our customers—who are proud to turn out a hairstyle that is perfect for you personally. May we expect you to give them a try? We'd love to have you call...

Megie Mirror Beauty Salon
Phone 663-0816
2225 Jackson Rd., Ann Arbor

Older Adult Group Sees Slides of European Tour

The January meeting of the Older Adult Group of the Methodist church took place Saturday afternoon in the church social center. There were 30 members and guests present. The Rev. G. T. Nevin, pastor of Salem Grove and North Lake Methodist churches, who was a guest, asked the blessing prior to the pot-luck dinner.

The Rev. Robert Worgess, pastor of the Chelsea church, introduced Al Kleis who presented the after-dinner program—pictures taken on a tour of Europe including scenes in Germany, Austria, Italy and others.

The devotional service at the meeting was in charge of Mrs. Herbert Paul.

Table decorations and a birthday cake were provided by Mrs. Gladys Klumpp and Mrs. Valma Dorr. The cake honored five members whose birthdays occur during the month—Mrs. Mabel Artz, who will be 98 years old Jan. 31, Carl Schlosser, Mrs. Irv Weiss, Mrs. Hilda Pierce and Alfred Hostler. Mrs. Harry Prudden, the group's "sunshine" chairman, reported sending cards to Mrs. Rae Lillie and Mrs. Ella Walker.

The next meeting of the Older Adult Group will be held Feb. 15, and members will need to bring only their own table service; the dinner will be provided by the Action Group of the church.

Witnesses Will Meet at Portage High School

Members of the Chelsea Congregation of Jehovah's Witnesses are planning to participate in the semi-annual Circuit Circuit Assembly of Jehovah's Witnesses at Portage Northern High school, according to Chelsea presiding minister, Raymond Tyskiewicz. The assembly will meet Jan. 24, 25 and 26.

Tyskiewicz had been scheduled to speak to the assembly Saturday afternoon.

ATTRACTIVE PLANTER

A gay and attractive planter perfect for family rooms or informal dining areas, can be made from an upside-down sombrero or large straw hat, suspended on chains from ceiling or wall bracket.

its. Fill the hat with trailing greens like ivy or philodendron, leaving plants in individual clay pots for easy removal when they're ready for watering.

Subscribe Today to The Standard!

WATERLOO BEAUTY SHOP

Operated By Rosemary Klink.

Open Tues. thru Sat., 8 a.m. to 6 p.m.

475-8895

CALL FOR APPOINTMENT

Tastes good!

Milk's a taste

treat for the

entire family

to enjoy

daily.



Arrange delivery of our

top-quality milk and other dairy products.

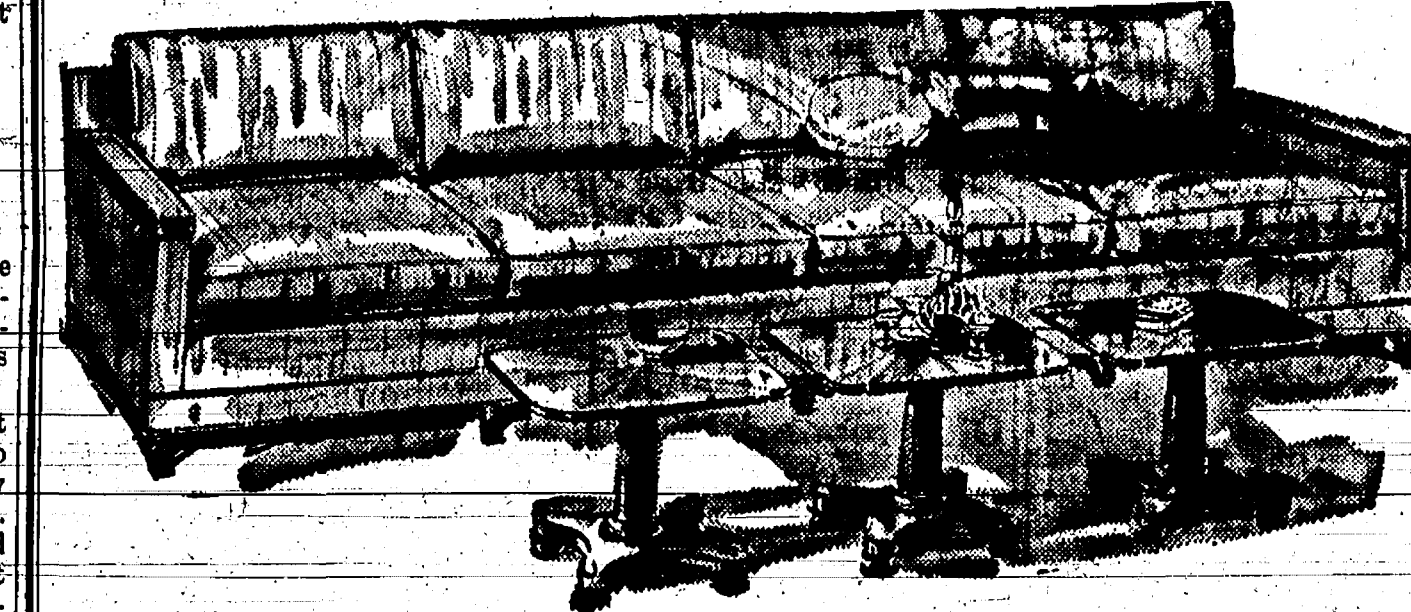
WEINBERG DAIRY

QUALITY PASTEURIZED DAIRY PRODUCTS

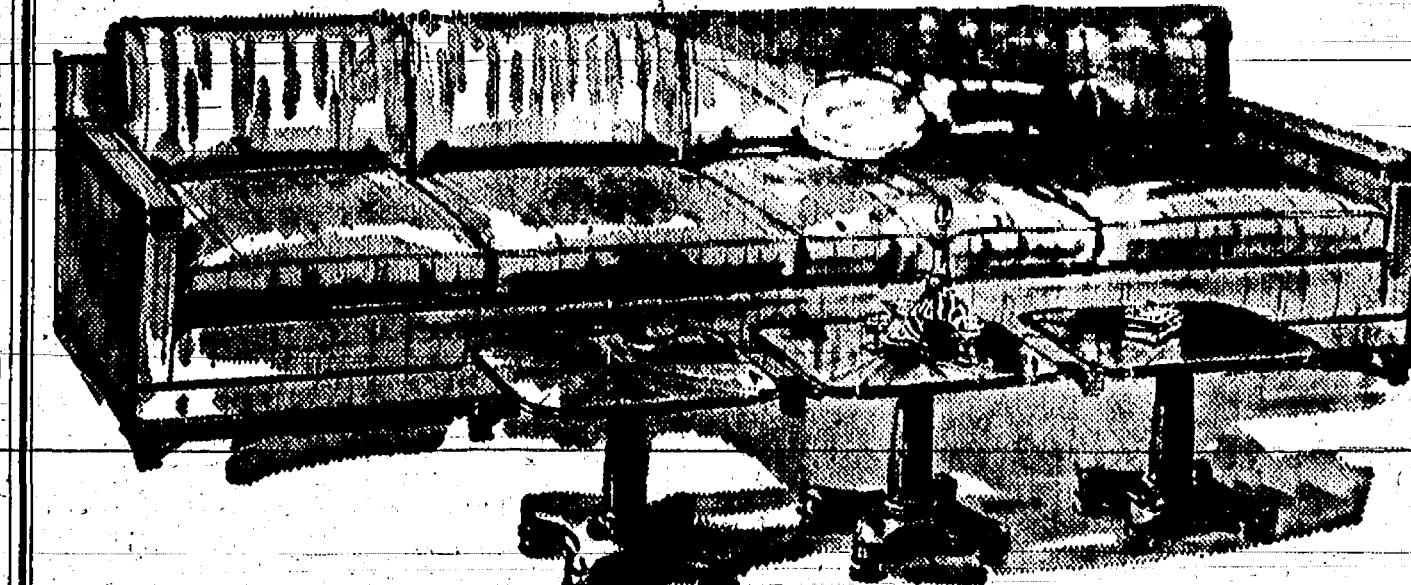
20056 W. Old US-12

Phone GR 5-5771

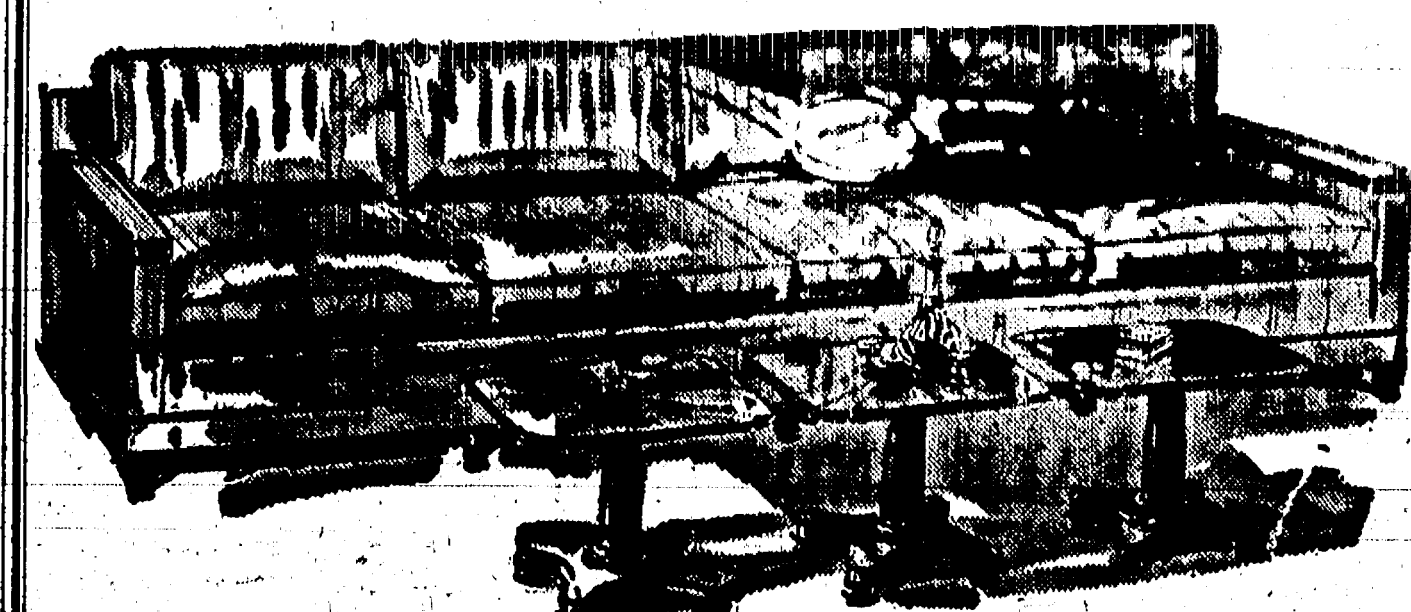
ONLY 3 DAYS LEFT



FURNITURE SALE ENDS SAT. JAN. 25

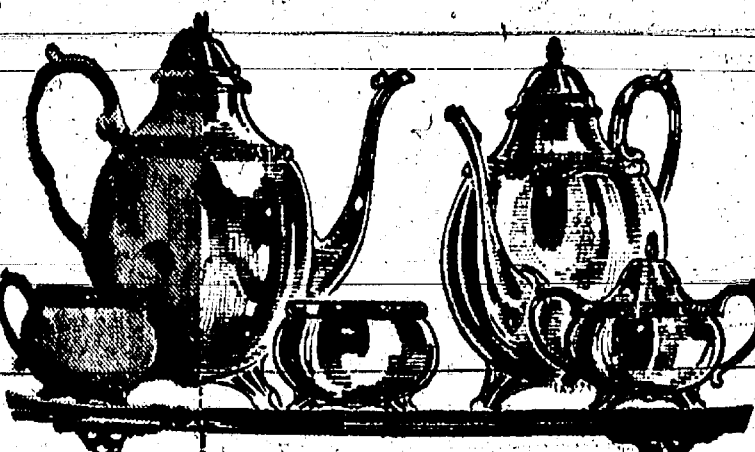


LAST CHANCE TO SAVE BIG BARGAINS - HURRY



MERKEL BROTHERS

ALL SILVER REPLATING REDUCED 20% DURING JANUARY ONLY



BEFORE AFTER

Every Item Replated at Sale Prices

Since silver metal prices are up 50% and still rising... this is an excellent time to take advantage of these low prices to have your worn silverware, antiques and family heirlooms replated like new. These pieces are now more valuable than ever and make wonderful gifts. All work QUADRUPLE SILVERPLATED by our skilled silversmiths and Sale prices apply to ALL pieces.

FOR INSTANCE

Article	Reg. Price	Sale Price
Tespot	\$27.50	\$21.97
Creamer	14.50	11.80
Candlestick (per inch) ..	1.55	1.24
Sugar bowl ..	15.95	12.76
Trays (per sq. in.) ..	34	27.12

EXPERT REPAIR SERVICES AVAILABLE

Dents removed... Items straightened... Broken handles, legs, knobs, repaired & replated... Missing parts & insulators repaired & replaced... New combs, brushes, mirrors, knife blades, thermos fillers furnished... Gold, copper plating... Sterling and pewter expertly refinished

SALE ENDS JANUARY 31 BRING IN SILVER TODAY!

Winans Jewelry Store

Continuing Our Clearance

SALE WOOL SWEATERS

Values to \$13.95

On Sale at \$6 to \$9

Cleaning House on Odds & Ends of Nylon Hose

Take Your Pick - 50c pr.

Were as much as \$1.35 and \$1.50. Mojuds and Kayser's.

ALL WOOL DRESSES From 1/3 to 1/2 Off

Patty Ann Shoppe

Junior Varsity Loses at Dexter, Downs Dundee

Chelsea JV cagers had a more successful week-end than their older counterparts as they lost narrowly to Dexter and dunked Dundee, 83-60, to bring the season record to 7-4.

Poor field and foul shooting were blamed for the Friday night loss to Dexter, when the Little Dreadnaughts barely sneaked by Chelsea, 49-46.

Chelsea's promising half-time lead of 26-10 disappeared during the second half as the Dreadnaughts' 51 percent foul shooting gave them the important few points Chelsea sacrificed with a 38 percent record from the charity stripe.

Both teams demonstrated a mediocre 31 percent field shooting record, although Chelsea managed to outscore their opponents by six points.

Sweeny, McClear and Hegules led the offense with 11, 10 and 10 points each; rebounding was paced by Sweeny with nine.

Things seemed brighter to Coach Terpstra Saturday night as Chelsea overpowered Dundee, 83-60, with fast break and hustle.

Seven of 10 players scored during an excellent Chelsea first half, leaving the scoreboard at 46 to 24, Chelsea, at half-time.

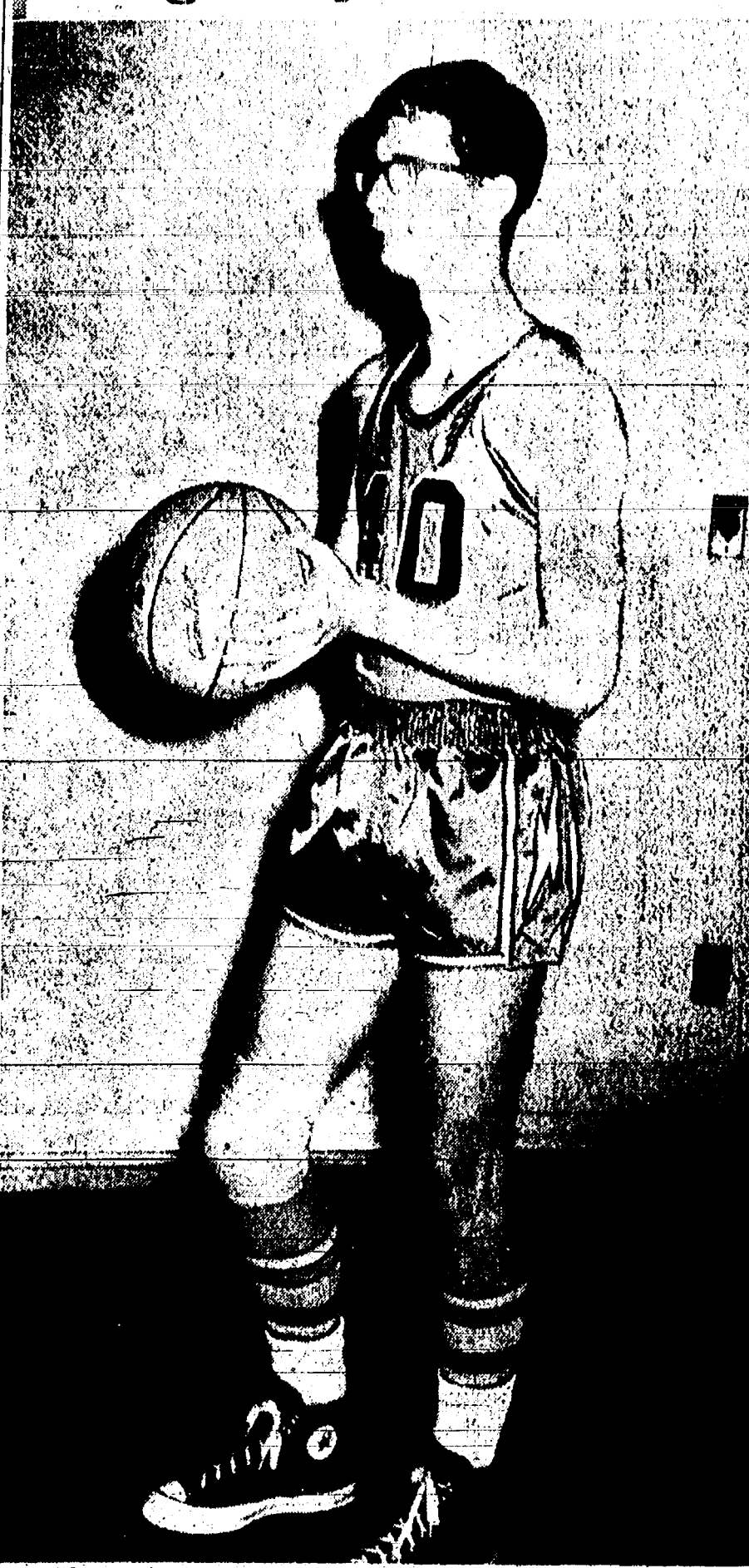
Jim Hegules played his best game of the year as he relentlessly dunked baskets and snatched rebounds, accumulating a total of 25 points and nine rebounds. McClear and Sweeny proved to be offensive leaders with 16 and 17 points each.

Chelsea foul percentages showed a drastic increase of 38 to 63 from Friday to Saturday. Field shooting improved from 31 to 39 percent.

BELL NOT FOR SELL

Long Beach, Calif.—Harry Fulton announced the whistle of the Queen Mary will not be sold to students of the University of Washington because it's too loud. The bell weighs more than a ton and can be heard 15 miles.

Cager of the Week



JOHN HEPBURN, junior guard, has also played center and forward during his long career as a basketball player. He began organized basketball when he joined the eighth grade team, then graduated to the freshman and JV squads. This is his first season as a varsity cager. Other favorite sports include football, which he played during his freshman and sophomore years. He was a varsity trainer this year. Baseball, swimming and all kinds of hunting rate high on his sports list. Other activities include varsity club, trip club and bass clarinet player for the band. English and history are favorite subjects in the academic field. John is a member of the Congregational church and is employed part-time in the church. Future plans include college and seminary. He is the son of Mr. and Mrs. Max Hepburn, 1191 Pierce Rd. He has a brother, Tom, Beach Junior High seventh grader; and two sisters, Nancy, in fifth grade at North; and Cynthia, a WCC graduate.

Fortune Stockholders OK Proposed Merger

Fortune Industries stockholders agreed 100 percent with plans to merge with Michigan Seamless Tube Co. at a meeting Saturday. President Leonard Fortune said that plans are proceeding smoothly for the acquisition of all the assets of the ceramic and plastic abrasive products manufacturers by Michigan Seamless.

Stockholders of Michigan Seamless will determine the fate of the proposal Feb. 11.

Sentenced on Charge of Falsifying Prescription

Mary Lou Bentley, 30, of 311 Congdon, was sentenced in Circuit Court Friday to two years probation and \$102.50 fines and costs for obtaining a drug by false prescription.

She pleaded guilty Jan. 10 before District Court Judge Patrick Conlin to falsifying a prescription for drugs containing amphetamine obtained at the Regency Pharmacy, 775 S. Main.

Area Scouting Shows Rapid Growth in '68

A healthy 7.5 percent membership increase during 1968 in boy scouts, cubs and explorers was announced by Don Holloway of Chelsea, chairman of Iroquois District Organization and Extension Committee.

Iroquois District, including Whitmore Lake, Dexter, Chelsea, Manchester, Milan and Saline, registered a larger growth rate than the five percent announced by Portage Trails Council. Portage Trails includes all of Livingston and Washtenaw counties.

Two Chelsea Churches Elect New Officers

Two area churches have reported election of officers at their annual meetings during the past week.

St. Barnabas Episcopal church annual meeting was accompanied by a roast beef dinner prepared by Mrs. Jerrold Beaumont and Mrs. Jeremiah MacDougall Jan. 15. Ed Lauhon, Dave Atkinson, Mrs. Louis Ramp and Jeremiah MacDougall were elected to the Bishops Committee for four-year terms.

At First Congregational United Church of Christ, the Rev. Daniel A. Kelm-Hits church officers for 1968 as Moderator, Mrs. Geno Coltre; assistant, Orville Tompkins; clerk, Mrs. Franklin Gee; treasurer, Mrs. Lewis Bernath; financial secretary, Lionel Vickers; historian, Mrs. Larry Chapman; auditor, Paul Mann; trustees, chairman Ron Eder.

Interest in membership has increased to the point where "we are having difficulty in some areas finding active sponsoring organizations as fast as boys want to join," according to District Chairman Roland W. Spaulding.

Growth areas are cub scouting, for boys from eight to 10 years of age, which is growing at a rapid pace. Boy scouting, for boys 11 years and older, has always been popular and is continuing to grow in popularity. A new Exploring program for boys over 14, featuring vocational interest specialties, is scheduled for development this year.

Spaulding attributed District growth to several factors. He believes boys are eager to participate in activities planned with adult guidance, and enjoy belonging to a respected organization.

Widespread community support from local United Funds and Community Chests was praised by

Spaulding for contribution of funds for Portage Trails Council operations. He noted that the Council provides guidance and assistance to the volunteers, including training programs for all adult leaders. The Council-operated Scout Service Center performs a number of functions that would be impractical at lower levels.

Professional guidance given scouts by Rogers E. Claussen, Iroquois District Scout Executive, was also mentioned as a contributing factor to district growth. "His full-time service provided by the Council played a key role to our growth," according to Spaulding.

Spaulding said the most important role in shaping lives through scouting was that filled by volunteer leaders. Iroquois District has more than 450 men and women actively associated with the program. "With this type of dedicated leadership to build upon, and new adult volunteers, we should reach new goals in 1969."

CHARM BEAUTY SALON

4396 CLEAR LAKE ROAD
(Formerly of Grass Lake)

Two Operators - Hair Styling and Wig Service

PHONE 475-2700

Gary Hughes Wins Army Promotion

St. Chelsea, Mich., was promoted to specialist Four Jan. 8 and assigned to Headquarters Company of the 3d Infantry Division's Supply and Transportation Battalion, near Würzburg, Germany. His parents, Mr. and Mrs. Homer Conley, live at 8775 Main.

Notice of Meeting of Sylvan Township Zoning Board

Notice is hereby given that a special meeting of the Township Zoning Board of Sylvan Township will be held in the Sylvan Township Hall, located in the Village of Chelsea, on Monday, February 17th, 1968, at 7:30 o'clock p.m.

At said meeting the Zoning Board will consider certain amendments to the existing Sylvan Township Zoning Ordinance relating to the following:

1. Fees for the Board of Appeal hearing are to be increased to \$50.00;
2. Application for amendments to the Zoning Ordinance or rezoning, shall require a fee of \$150.00.

The proposed amendments are on file in the office of Daniel Murphy, Sylvan Township clerk and may be inspected by any interested party.

Any party having an interest in said Township, or his duly appointed representative, shall be heard at such meeting as to any matters that should come before said Board.

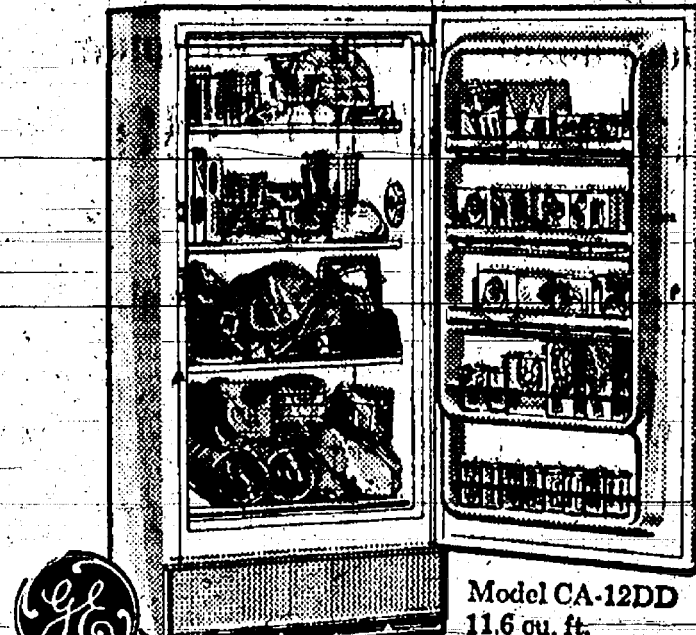
SYLVAN TOWNSHIP ZONING BOARD
HAROLD A. JONES, CHAIRMAN

SAVE UP TO \$100

On GE Floor Samples Models

RANGES - REFRIGERATORS - FREEZERS - TELEVISIONS - WASHERS - DRYERS

Low cost!
Big convenience!
Holds up to 406 lbs. frozen foods



Economy Food Freezer

- Be ready for unexpected company, busy days, bad weather!
- Cook ahead! Freeze whole meals — just heat and eat later.

\$189⁹⁵

SAVE

Check These Values and Many More!

SAVE

A Side-by-Side only 32" wide!



'Foodcenter 18'
28.1 cu. ft. • Model TFF-18DD

Full-height freezer. Holds up to 225 lbs.†
• Vegetable bin, meat and fruit pans • Butter conditioner • Rolls out on wheels for easy cleaning • GE colors or white

\$400⁰⁰

One Week Remaining

To Save Money and Visit with the

'ALASKAN KID'
DON TURNER

SALE
on

**SUITS - SPORT COATS
WINTER JACKETS - SHIRTS**

SALE ENDS FEB. 1st.

Strieter's Men's Wear

"The Place To Go for Brands You Know"



Automatic cooking and Self-Cleaning Oven...at low, low cost!



30" Automatic Range with P-7° Oven

\$279⁹⁵

Set oven timer—start and stop cooking automatically.

- Clock and Minute Timer—convenience outlet.
- Floodlighted oven with two Lock-Stop shelves.
- Accurate pushbutton controls for surface units.

17 Cu. Ft. Refrigerator Freezer Combination



'No Frost 17'
16.6 cu. ft. • Model TBF-17SD

- Jet Freeze ice compartment freezes cubes extra-fast!
- Mobile Cold with separate temperature controls.
- Rolls out on wheels!

\$289⁹⁵

FRIGID PRODUCTS

113 N. Main St., Chelsea

LLOYD R. HEYDLAUFF

Phone OR 9-6651